

# FOCAL/RENAULT

INSTALLATION OF LIVE / PREMIUM RENAULT  
Scenic III – June 2017



# RECOMMENDATIONS BEFORE INSTALLATION

---

- Reset all car radio audio settings:
  - Ambience = Natural
  - Bass / Midrange / Treble settings = 0
  - Loudness = OFF
  - Fader and Balance = Centred
- The speaker drivers require a break-in period (approximately 20 hours) before they reach optimal sound quality.  
After this break-in period, you can fine-tune the audio settings as you please.

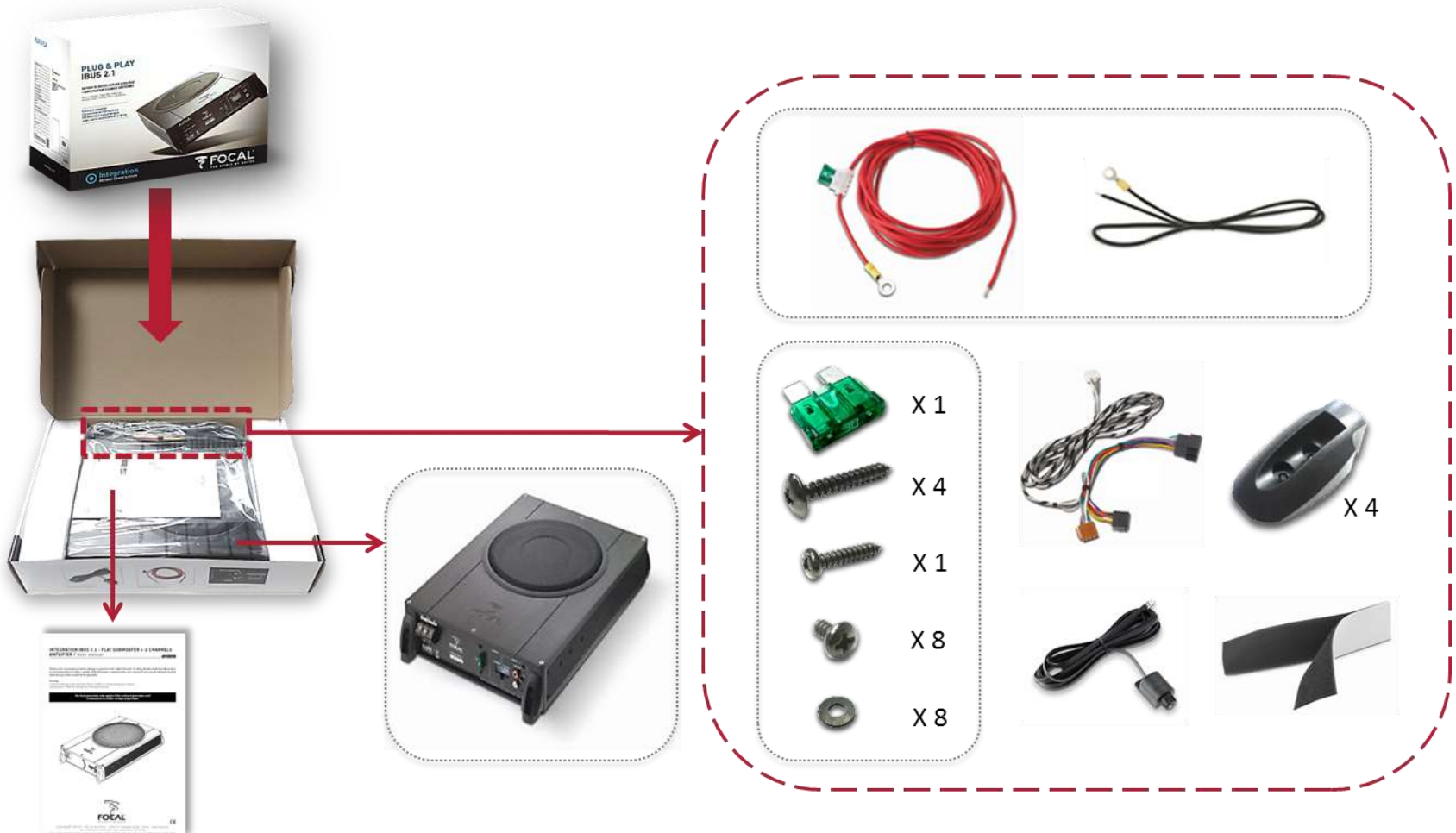
# I. UNBOXING AND LOCATION OF PARTS

IFR 165-4



# I. UNBOXING AND LOCATION OF PARTS

Ibus 2.1



Manuel d'utilisation

# I. UNBOXING AND LOCATION OF PARTS

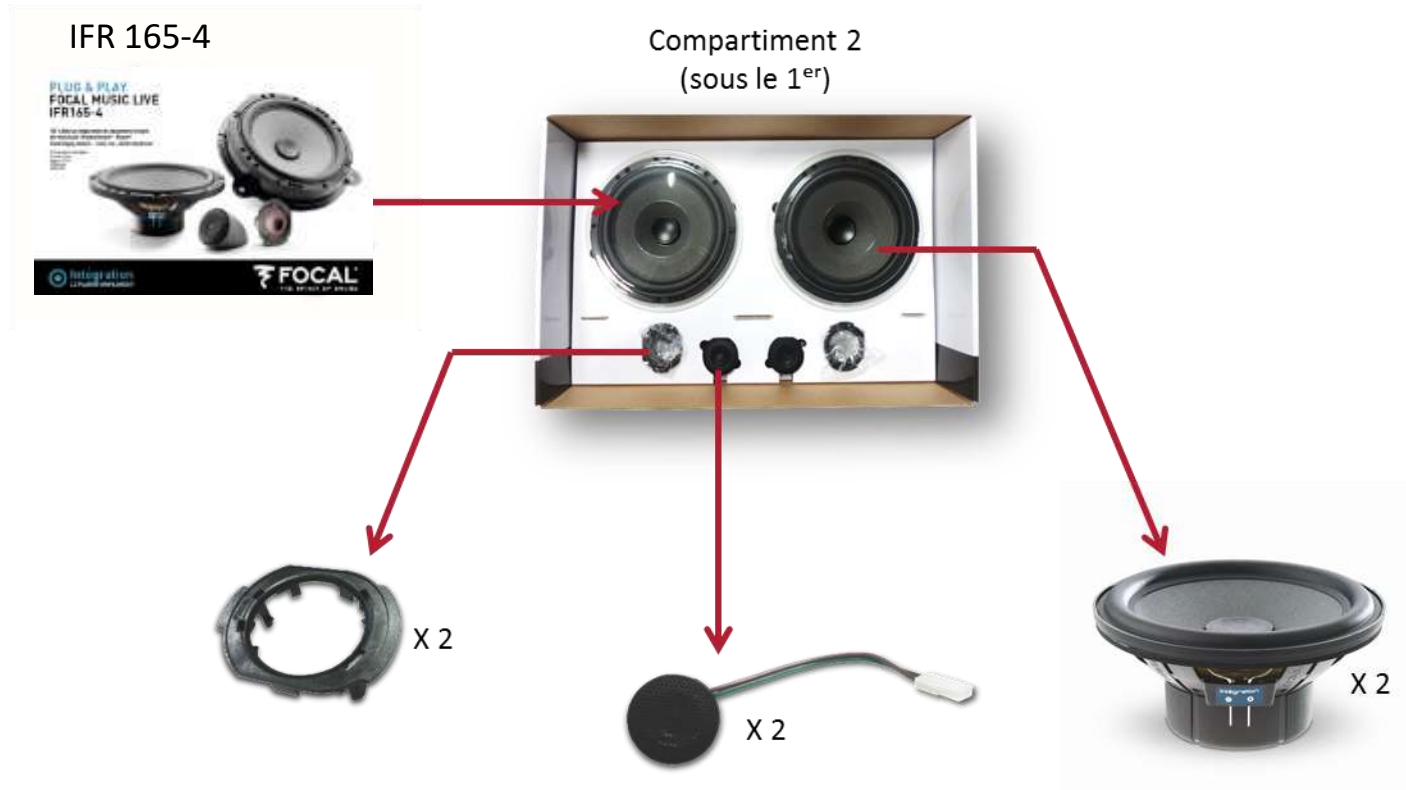
IFR 165-4



Compartiment 1



# I. UNBOXING AND LOCATION OF PARTS



# I. UNBOXING AND LOCATION OF PARTS

IFR 165-4



Sous le « Compartiment 2 »



## II. ASSEMBLING THE FRONT SPEAKER DRIVERS

### 1. Equipment required for assembling the woofer.



You must use this spacer ref. **7711579444**.



## II. ASSEMBLING THE FRONT SPEAKER DRIVERS

### 2. Connections

Note:

*the crossover (with the black shielding) can be mounted any way around.*



Speaker driver

Crossover



Fasten the crossover in place using a cable tie.

Note:

*the cable tie mustn't come into contact with the spider (yellow part) when the speaker driver is in motion.*

### III. INSTALLING THE FRONT SPEAKER DRIVERS

The picture below shows the location of the screws to remove.



1. Remove the console and unclip the connectic



### III. INSTALLING THE FRONT SPEAKER DRIVERS

2. Remove the clip below the console then remove the door panels using prying tools



3. Unclip the handle cable



### III. INSTALLING THE FRONT SPEAKER DRIVERS

---

#### 4. Remove the original speakers



#### 5. Rivet and connect the new Focal Speaker



## IV. ASSEMBLING THE TWEETERS

1. Equipment required for assembling the tweeter.



Connector



Crossover

2. Remove the grille by simply unclipping it.



## IV. ASSEMBLING THE TWEETERS

### 3. Slot the tweeter into the spacer making sure it's the right way up.

Note:

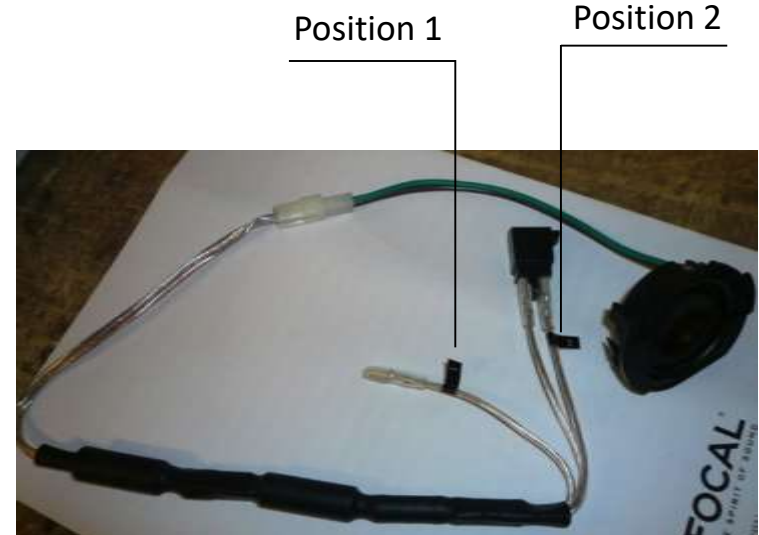
*slot the wires into the same side the 2 tabs are fixed to.*



### 4. Connect at position 2

Note:

*position 1 is not used in this set-up.*



## V. INSTALLING THE TWEETERS

---

1. Remove the tweeter cover then the tweeter



2. Disconnect the wire



## V. INSTALLING THE TWEETERS

3. Connect the filter to the tweeter



4. Put the tweeter in his housing then glue the Focal logo



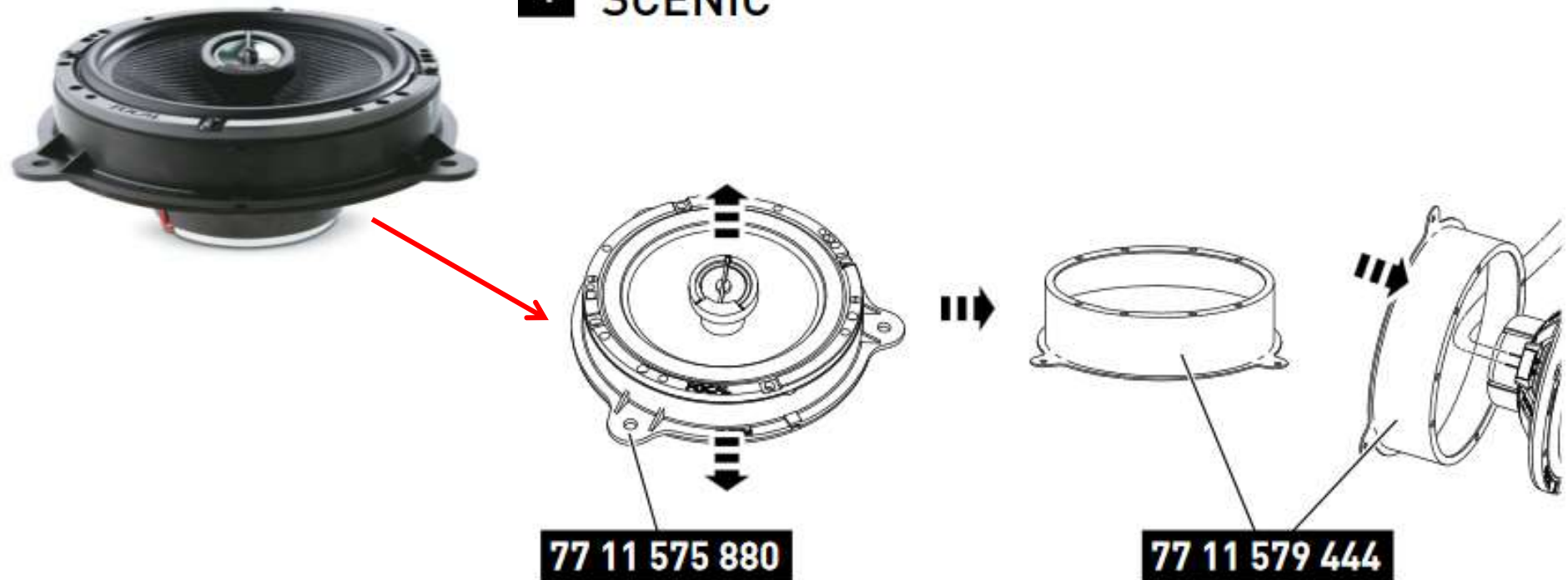
16



## VI. ASSEMBLING THE REAR SPEAKER

Remove the speaker driver spacer then mount the spacer ref 7711579444

### 4 SCENIC



## VII. INSTALLING THE REAR SPEAKER DRIVERS

The picture below shows the location of the screws to remove.



### 1. Remove the console



## VII. INSTALLING THE REAR SPEAKER DRIVERS

2. Disconnect the connectic then remove the panel



3. Remove the panel doors using prying tool then, unclip the handle



## VII. INSTALLING THE REAR SPEAKER DRIVERS

### 4. Remove the original speakers



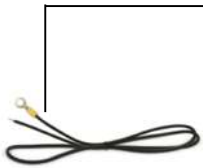
### 5. Rivet and connect the Focal speaker drivers and turn the tweeter up



# VIII. PREPARING THE SUBWOOFER

Equipment required for installing the subwoofer:

Ground cable



Power cable



Crimp sleeve



Power connector



Subwoofer cable with remote control



Adapter



Ibus 2.1



Extension cable



Head unit – subwoofer interconnect cable



Hook-and-loop fasteners (e.g. Velcro)



Connectors



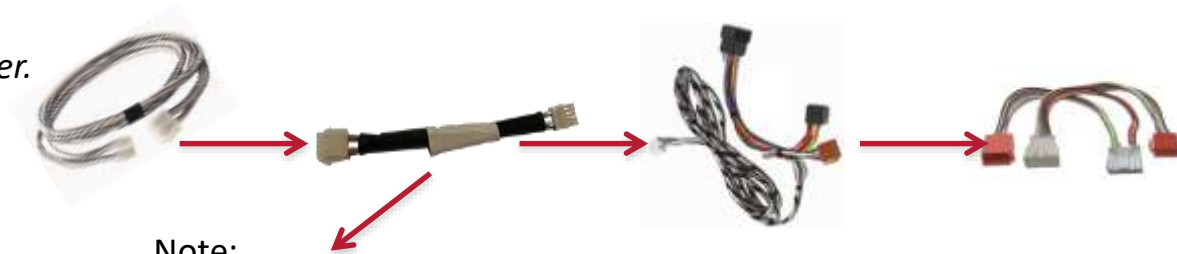
## VIII. PREPARING THE SUBWOOFER

1. Glue the two strips of hook-and-loop fasteners as shown.

Note:  
*be careful not to cover up the serial number.*



2. Connect the extension cable to the head unit - subwoofer interconnect cable.



Note:  
*the adapter can only be used on an original head unit*

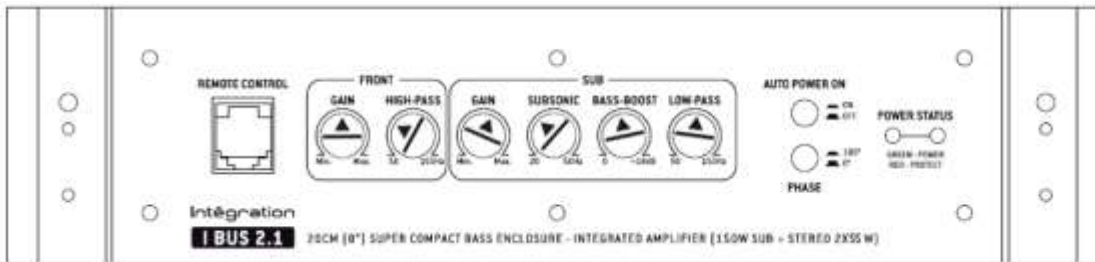
Already used during the installation of Live kit on vehicles which are not equipped with original tweeter cables



3. Cut off the terminal and splice.

# IX. POSITIONING AND ADJUSTING THE SUBWOOFER

## 1. Position the subwoofer under the trunk's floor



Auto Power = ON  
Phase = 0°

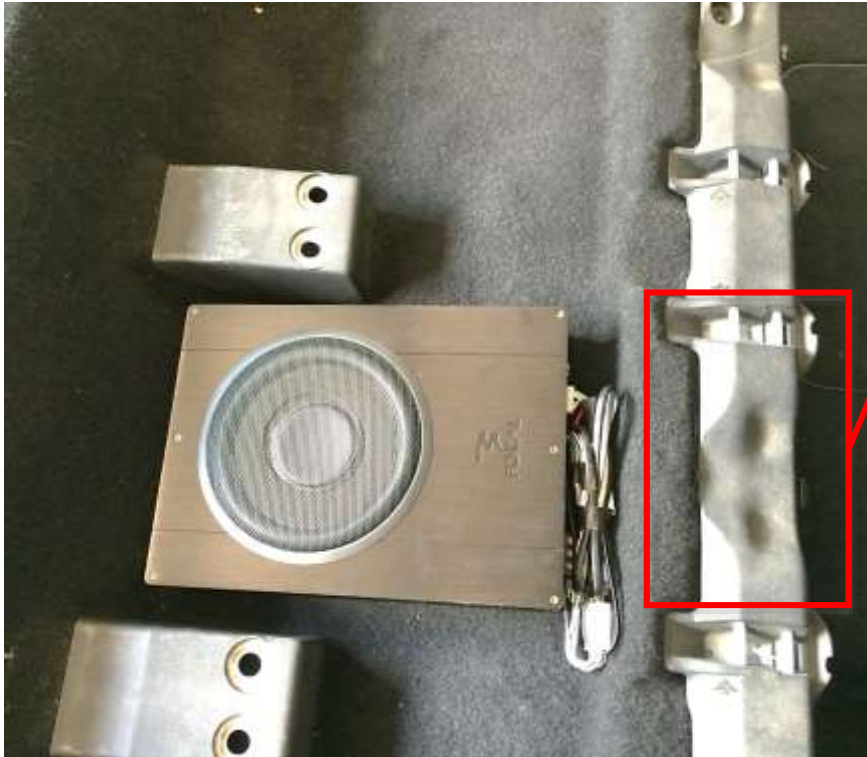
Auto Power = ON

Phase = 0° OU 180°

Phase = 180, this depends on many parameters, so it is advisable to try both positions without altering any other settings, and then to choose the one which sounds best.

## IX. POSITIONING AND ADJUSTING THE SUBWOOFER

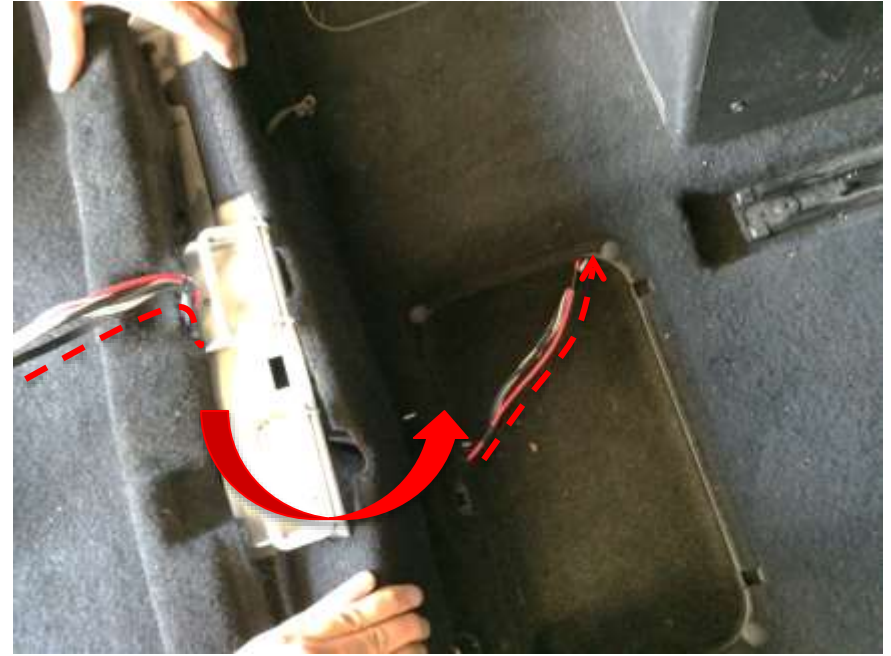
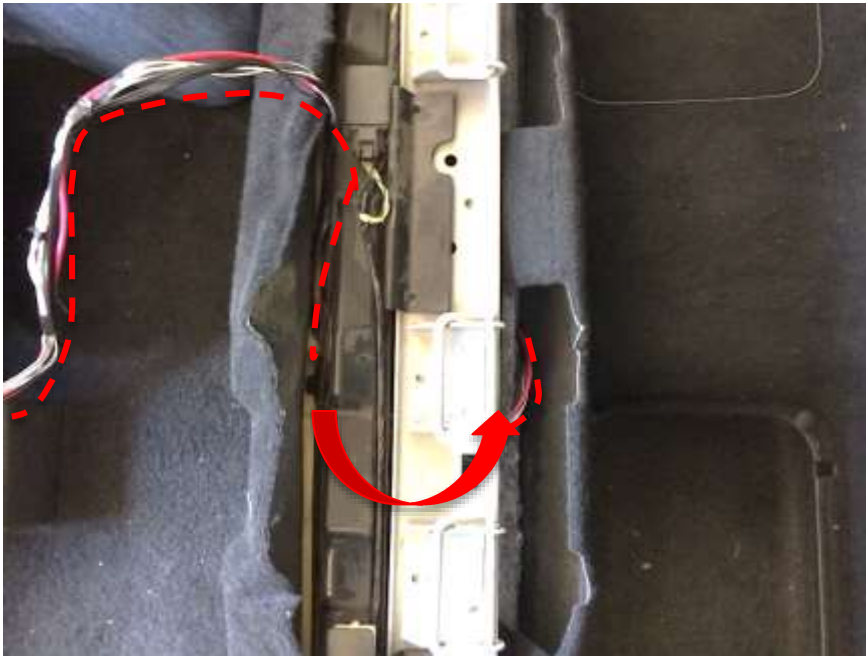
2. Connect the black cable (ground cable) to the subwoofer, unclip the panel then connect the cable on the car floor





## X. INSTALLING THE SUBWOOFER

1. After connecting the filter and the speaker extension to the subwoofer, run the beam under the seat retainer bar and then run it along the trap



## X. INSTALLING THE SUBWOOFER

### 2.a Remove the central console



# X. INSTALLING THE SUBWOOFER

## 2.b Remove the central console then the connectics



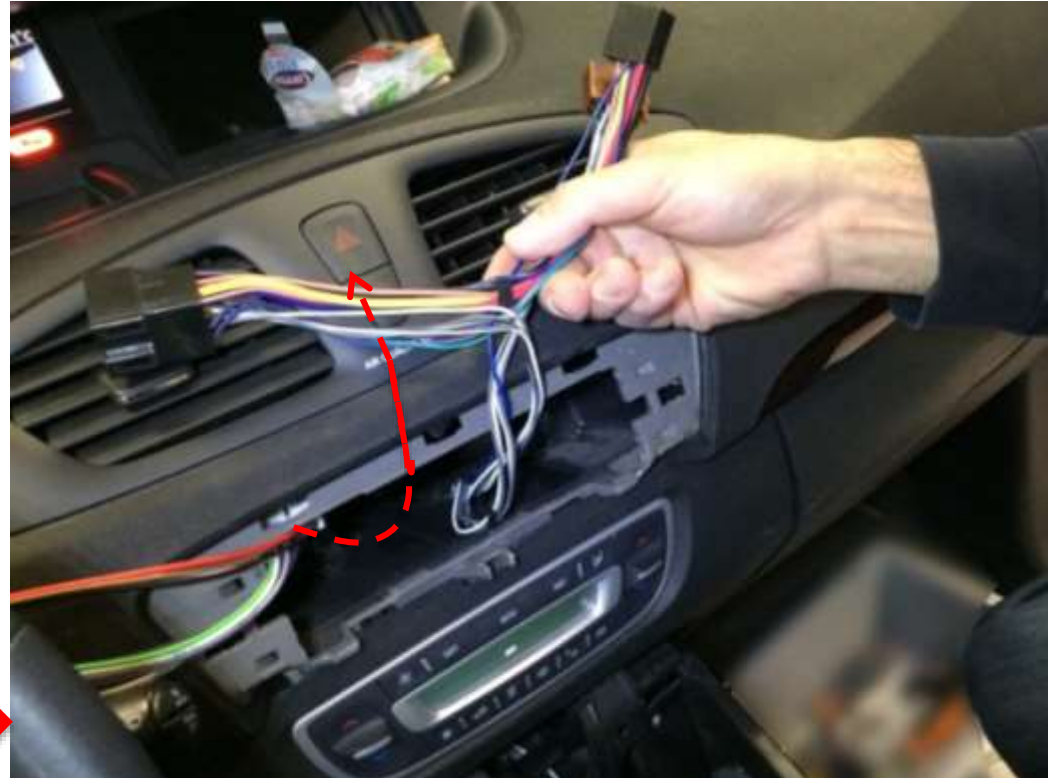
# X. INSTALLING THE SUBWOOFER

## 3. Remove the contour of the car head unit and unplug it



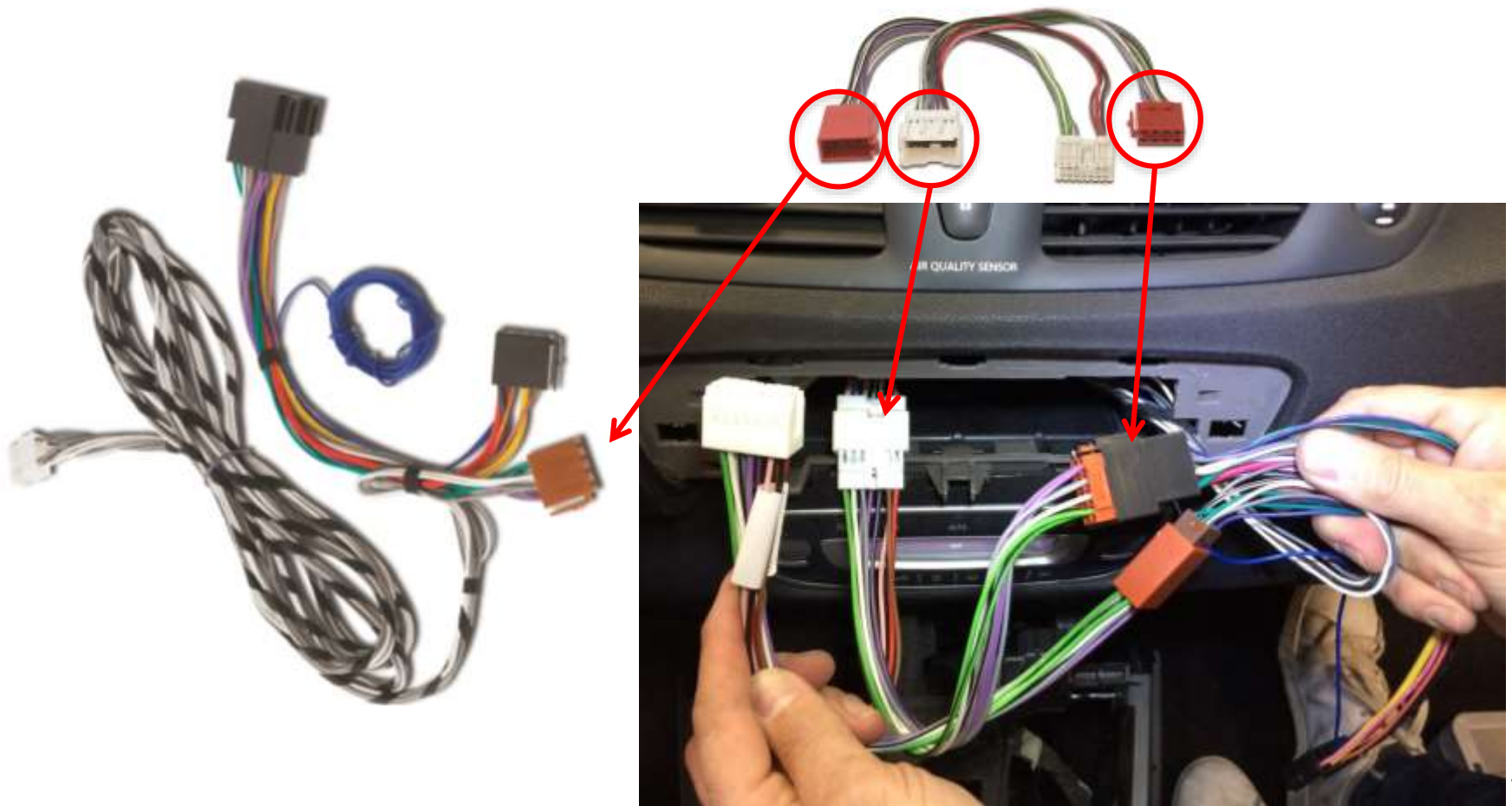
## X. INSTALLING THE SUBWOOFER

4. Run the cable under the gear shift and then reassemble it under the car head unit



## X. INSTALLING THE SUBWOOFER

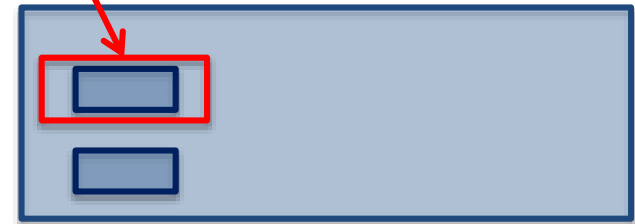
5. Connect the connecting cable to the beam and to the vehicle beam



30

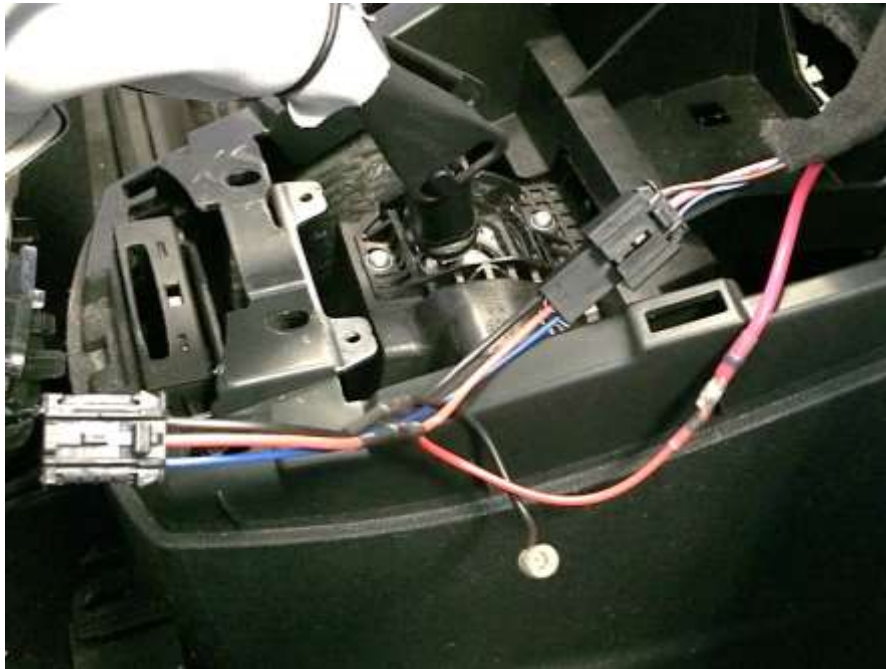
## X. INSTALLING THE SUBWOOFER

6. Connect the female socket of the connecting cable to the top socket of the car head unit



## X. INSTALLING THE SUBWOOFER

7. Connect the power adapter to the power cable of the subwoofer and the power socket



8. Run the remote cable into the glove box from the center console and install the control












[www.focal.com](http://www.focal.com)

FOCAL® is trademark of FOCAL-JMLAB®

