

FOCAL/RENAULT

INSTALLATION OF PREMIUM 4.1 FOR
TWINGO III - *April 2018*



FOCAL *INSIDE*

RECOMMENDATIONS BEFORE INSTALLATION

Reset all car radio audio settings:

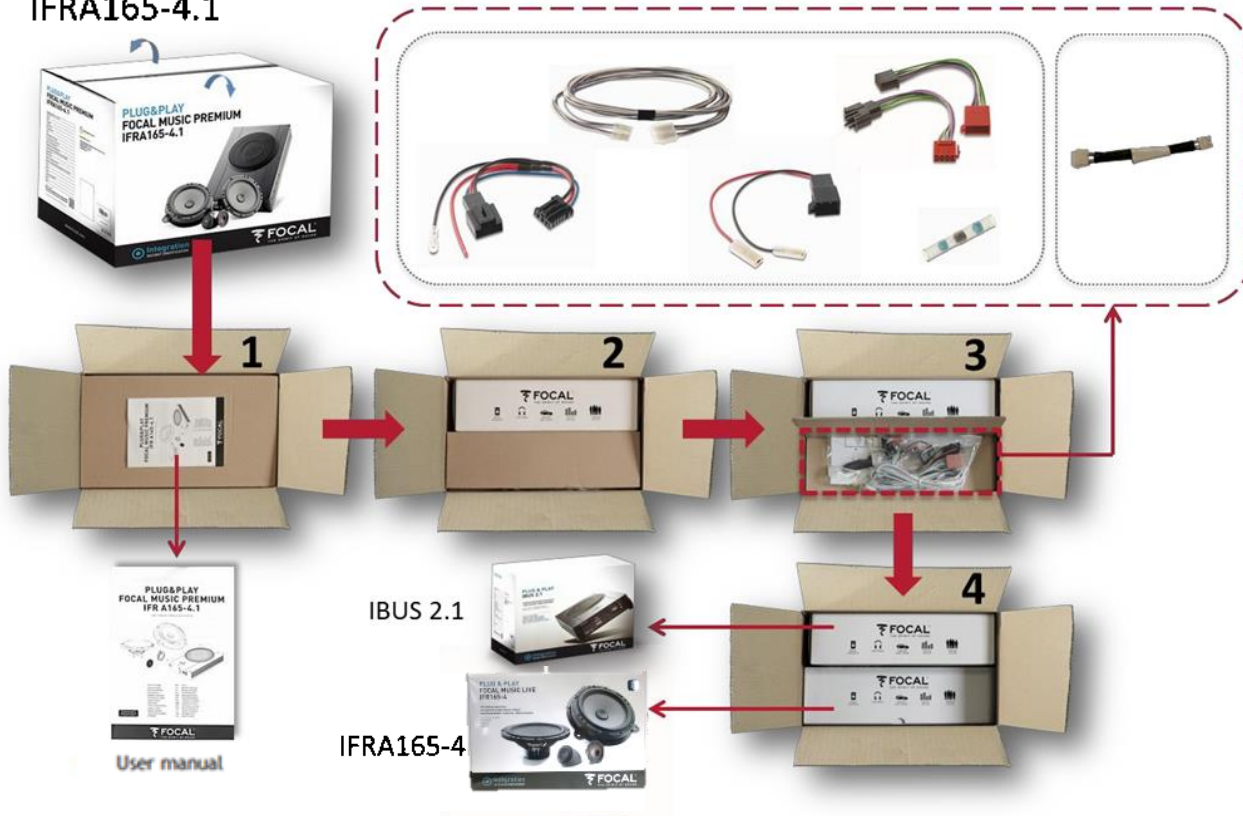
- Ambience = Natural
- Bass / Midrange / Treble settings = 0
- Loudness = OFF
- Fader and Balance = Centred

The speaker drivers require a break-in period (approximately 20 hours) before they reach optimal sound quality. Start with tracks without too much low frequencies at a low volume. Then turn the sound up little by little.

After this break-in period, you can fine-tune the audio settings as you please.

I - UNBOXING AND LOCATION OF PARTS

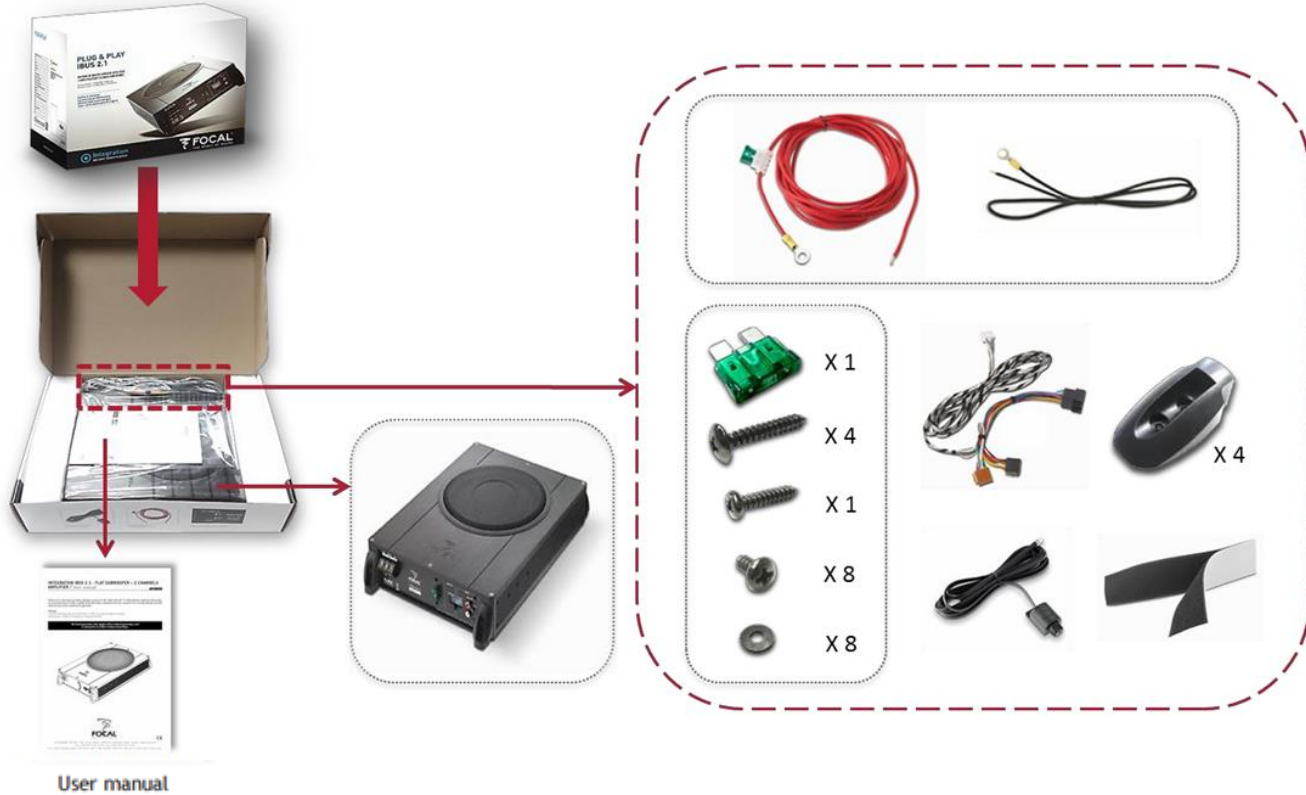
IFRA165-4.1



FOCAL[®]INSIDE

I - UNBOXING AND LOCATION OF PARTS

Ibus 2.1

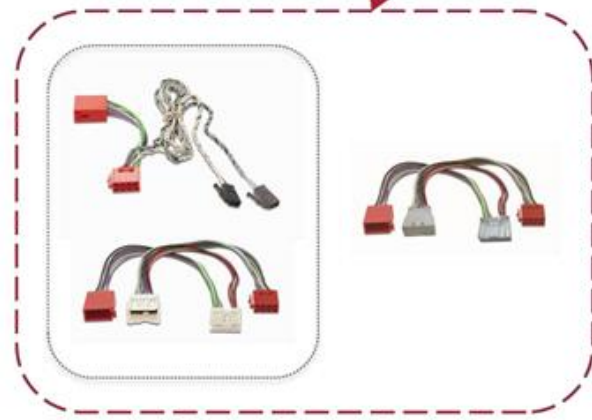


I - UNBOXING AND LOCATION OF PARTS

IFRA165-4



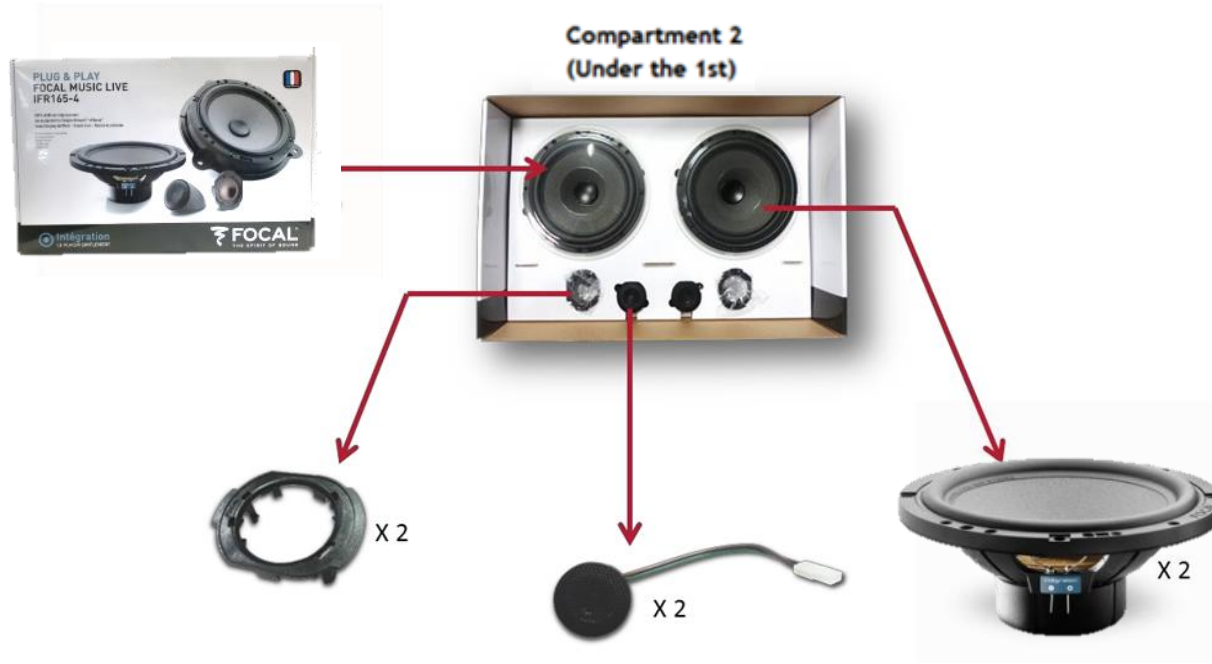
Compartment 1



FOCAL INSIDE

I- UNBOXING AND LOCATION OF PARTS

IFRA165-4



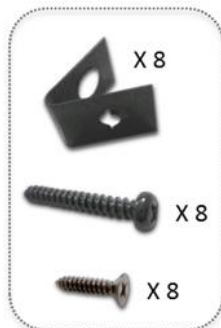
FOCAL[®]INSIDE

I - UNBOXING AND LOCATION OF PARTS

IFRA165-4



Under compartment 2



FOCAL[®]INSIDE

II - ASSEMBLING THE FRONT SPEAKER DRIVERS

1. Equipment required for assembling the woofer



II - ASSEMBLING THE FRONT SPEAKER DRIVERS

2. Connections

a. Insert the cable into the notch



b. Before you screw, make sure that the two logos are aligned



c. Screw the 4 screws

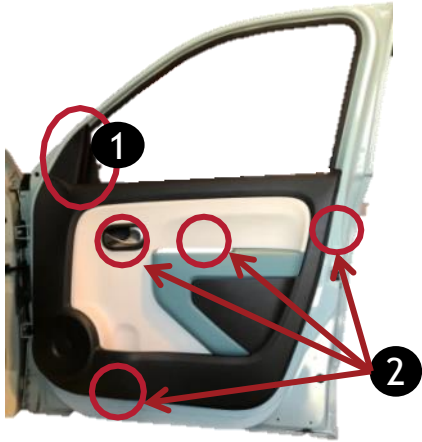


D. Block the crossover

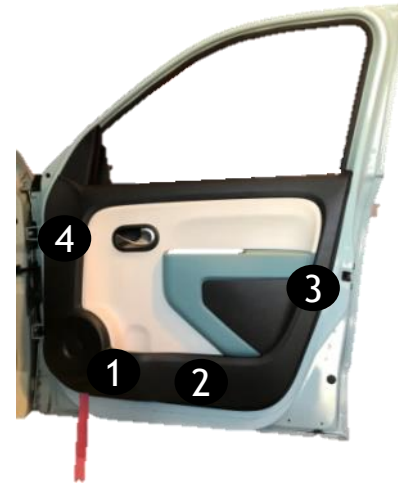


III - ASSEMBLING THE FRONT SPEAKER DRIVERS

- a. Unclip the plastic part in **1** then remove the clip that holds door panel .
- b. Remove the screws indicated in **2** .



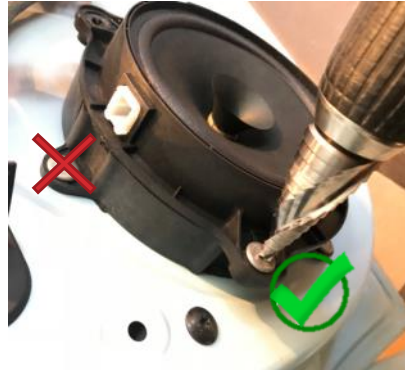
- c. Remove the front door panel.



III - ASSEMBLING THE FRONT SPEAKER DRIVERS

2. Remove the original speaker driver

a. Pierce the 3 rivets' head.



Note : Keep the spacer riveted to the door frame .



III - ASSEMBLING THE FRONT SPEAKER DRIVERS

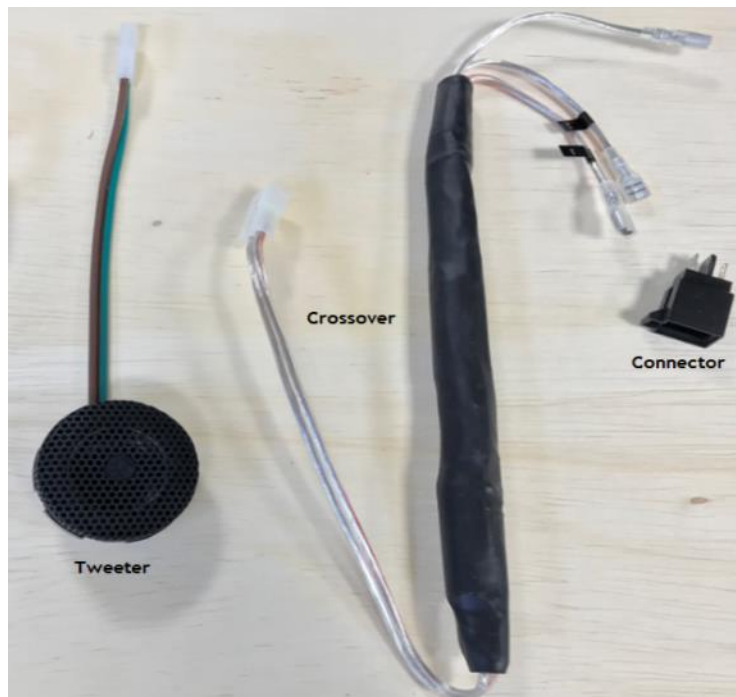
3. Installing the front speaker drivers

a. Rivet on the door frame and connect the Focal speaker driver.

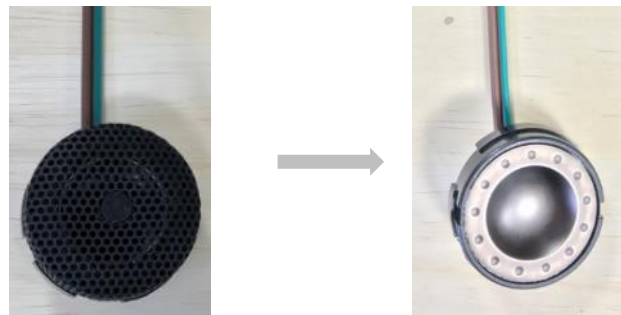


IV - ASSEMBLING THE TWEETER

1. Equipment required for assembling the tweeter

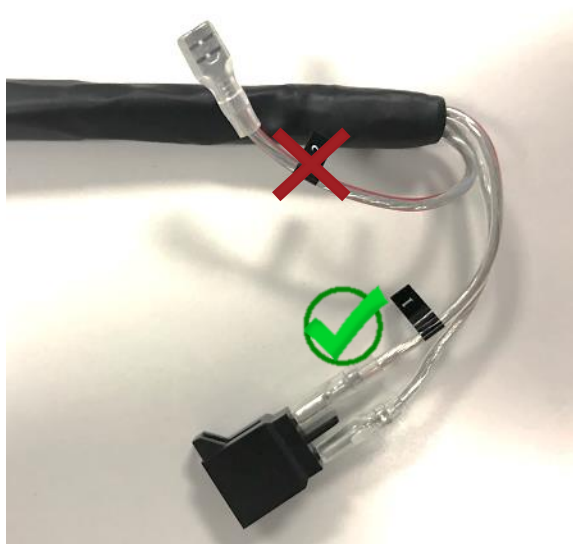


2. Remove the tweeter's grille by simply unclipping it



IV - ASSEMBLING THE TWEETER

3. Connect at position 1



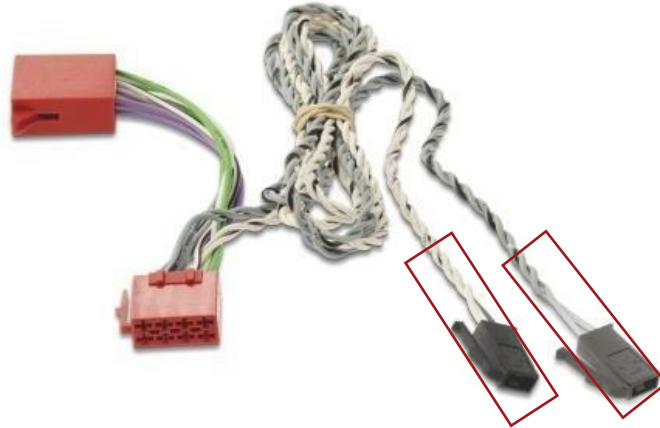
Note : Position 2 is not used in this set up.

4. Connect the crossover



V - INSTALLING THE FRONT TWEETER

1. Required equipment to connect the tweeter



White/black connectors
= For the right tweeter

Grey/Black connectors
= For the right tweeter

V - INSTALLING THE FRONT TWEETER

3. Tweeter cable passage

a. Remove the car stereo.



V - INSTALLING THE FRONT TWEETER

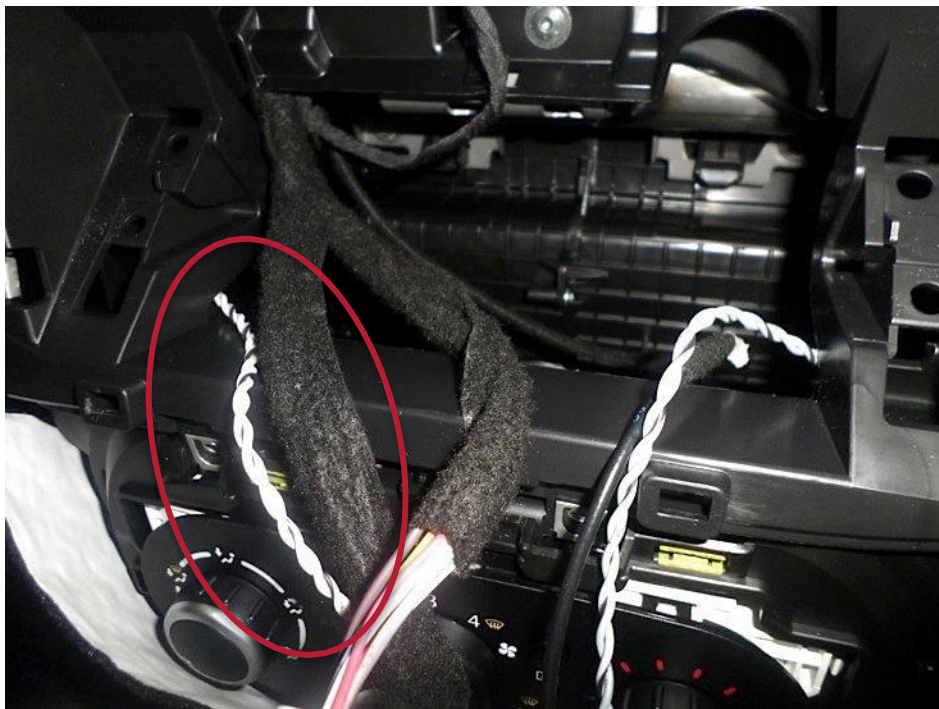
3. Tweeter cable passage
 - a. Remove the car stereo.



V - INSTALLING THE FRONT TWEETER

3. Tweeter cable passage

b. Left side cable routing (Black and White cable) .



V - INSTALLING THE FRONT TWEETER

3. Tweeter cable passage

c. Right side cable routing (Grey and Black cable) .




Note : Run the cable behind the glove box using a cable entry, Do not disassemble the glove box

V - INSTALLING THE FRONT TWEETER

3. Tweeter cable passage

d. Connecting the tweeter filter and then attaching it to the windshield pillar



 **Note :** Use what to attach the filter along the windshield pillar

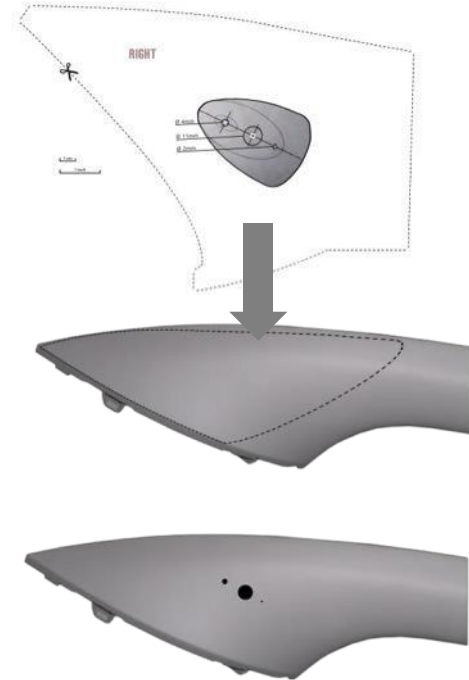
V - INSTALLING THE FRONT TWEETER

2. Installing the tweeter

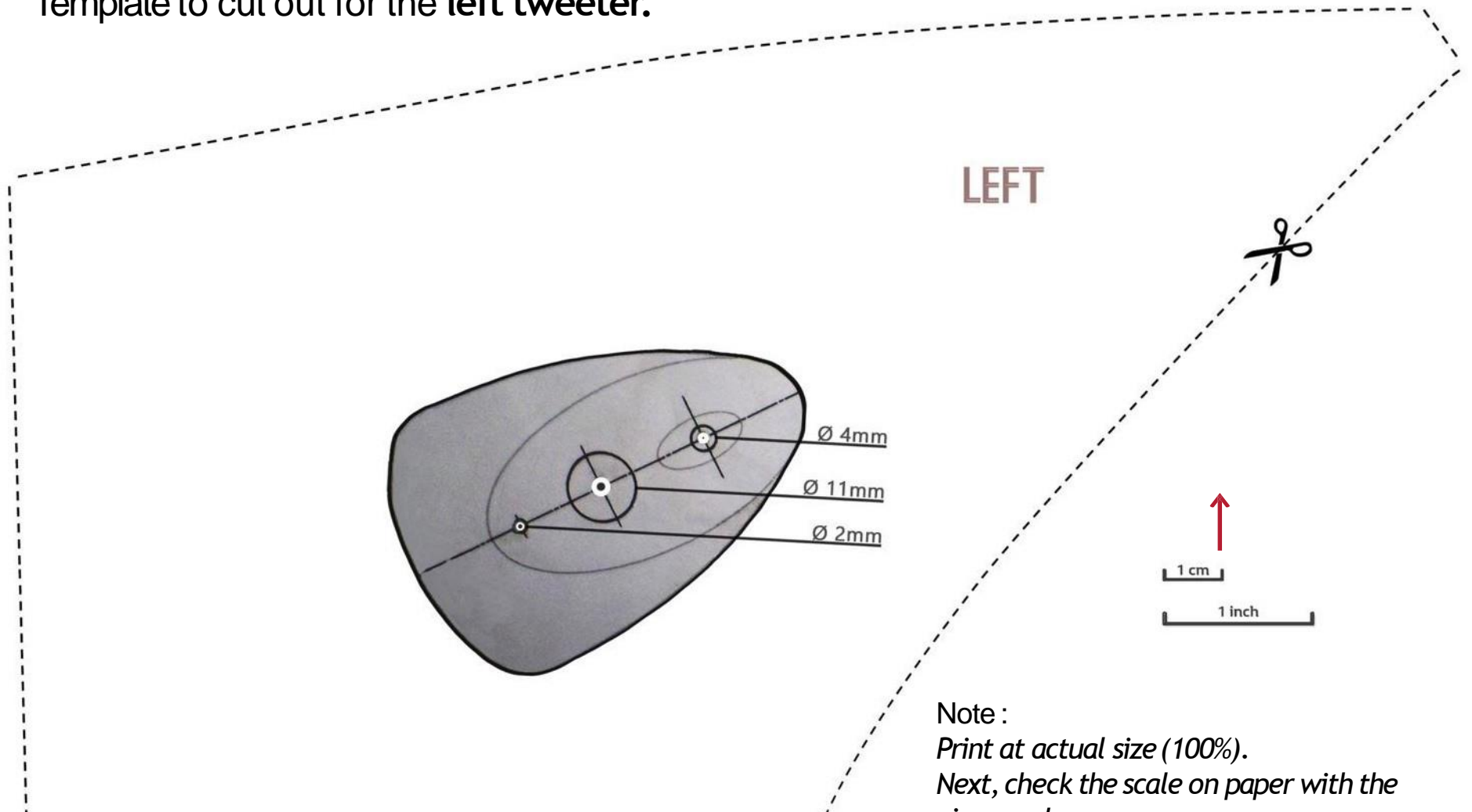
a. Remove the trim.



b. Present the templates (pages 17 and 18) on the trim and locate the screw drill location .



Template to cut out for the left tweeter.



Note :
Print at actual size (100%).
Next, check the scale on paper with the

Template to cut out for the right tweeter:

RIGHT



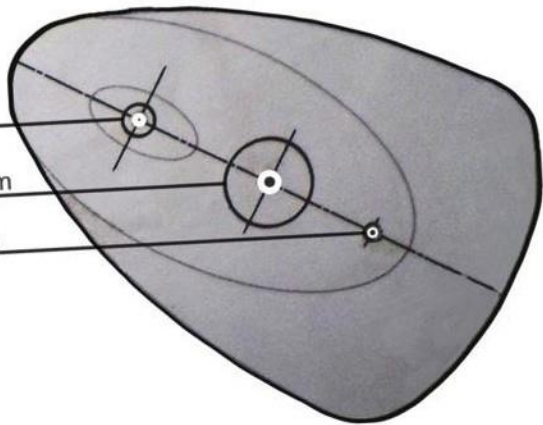
1 cm

1 inch

Ø 4mm

Ø 11mm

Ø 2mm



Note :

Print at actual size (100%).

Next, check the scale on paper with the

V - INSTALLING THE FRONT TWEETER

2. Installing the tweeter
 - c. Drill the trim and fix the support.




V - INSTALLING THE FRONT TWEETER

2. Installing the tweeter

- d. Position the tweeter in the shell and then fix it by making a slight quarter turn in the direction of clockwise.

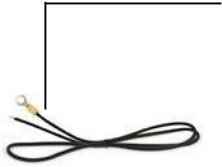


 **Note :** Reconnect the tweeter filter, replace the TW grille and do not refit the trim before passing the tweeter cable, see page 23/24.

VI - PREPARING THE SUBWOOFER

1. Equipment required for installing the subwoofer

Ground cable



Power cable



Heat shrinkable sleeve



Power connector



Subwoofer cable with remote control



Adapter



Ibus 2.1



Extension cable



Head unit - subwoofer interconnect cable



Hook-and-loop fasteners (e.g. Velcro®)



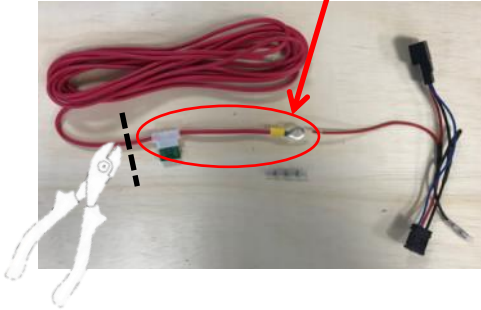
Connectors



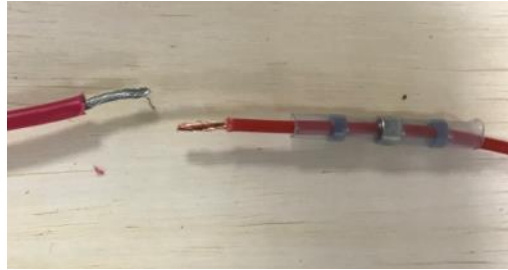
VI - PREPARING THE SUBWOOFER

1. Prepare subwoofer cable assembly

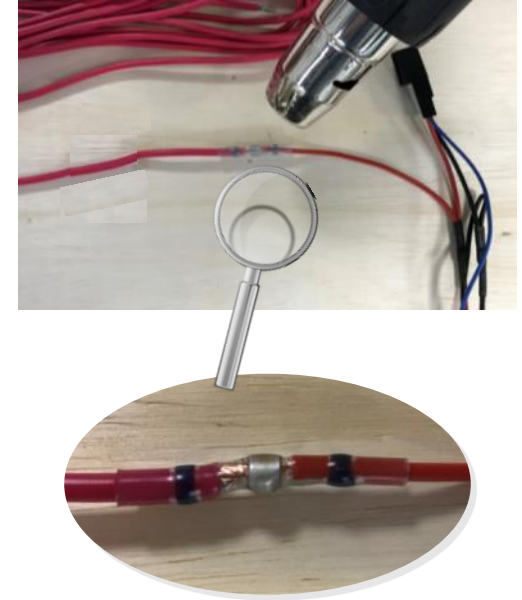
a. Remove the fuse and pod



b. Place the heat shrinkable sleeve over the stripped parts of the cables.



c. Use a heat gun to heat the heat shrinkable sleeve.



VI - PREPARING THE SUBWOOFER



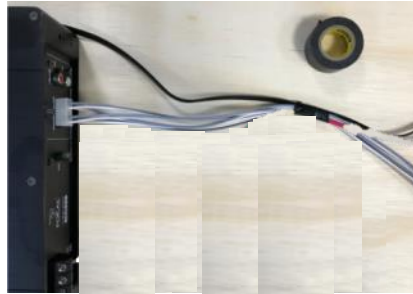
d. Connect the adapter to the extension cable.



e. Place the subwoofer without connecting it.



f. Tape the cables together every 20 cm.



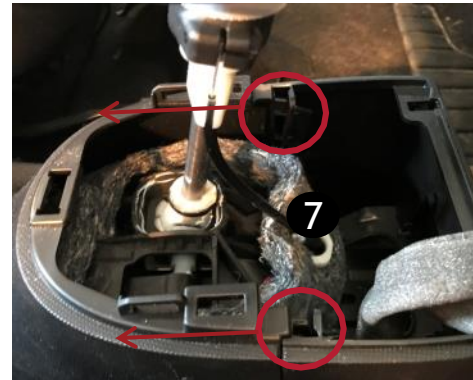
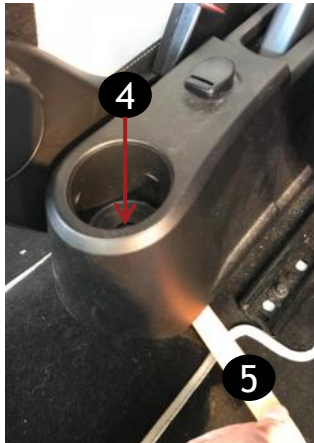
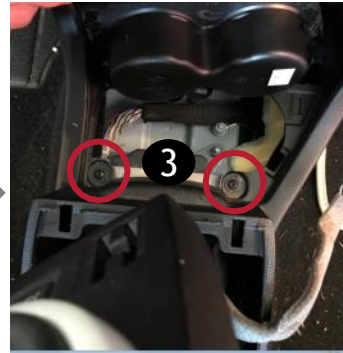
g. Keep slack for the cable's passage on the side of the head unit.



VII - INSTALLING THE SUBWOOFER

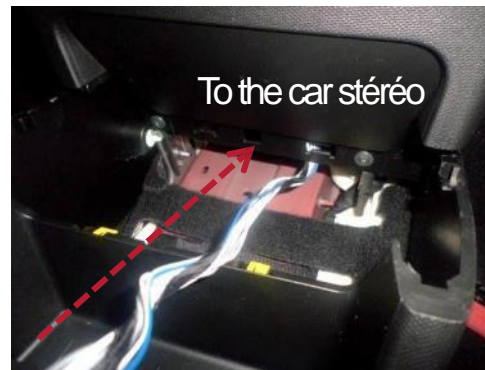
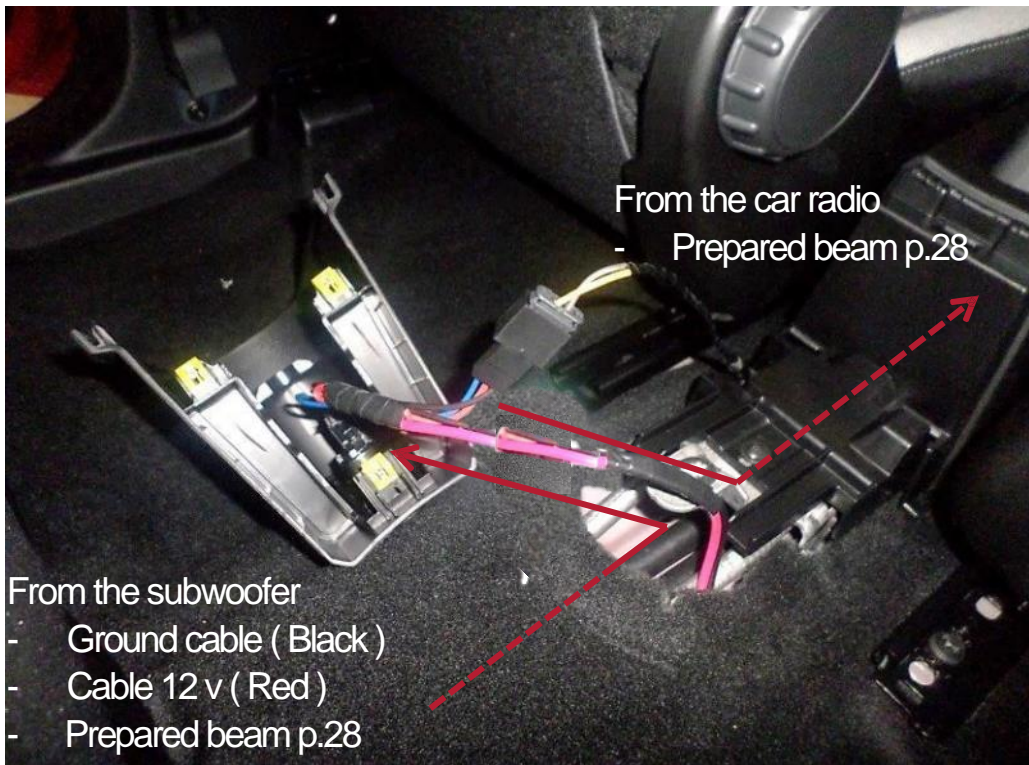
1. Disassembly of the central console

a. Unclip plastic trim



VII - INSTALLING THE SUBWOOFER

2. Passage of the power harness + Connection subwoofer + Cable remote control



VII - INSTALLING THE SUBWOOFER

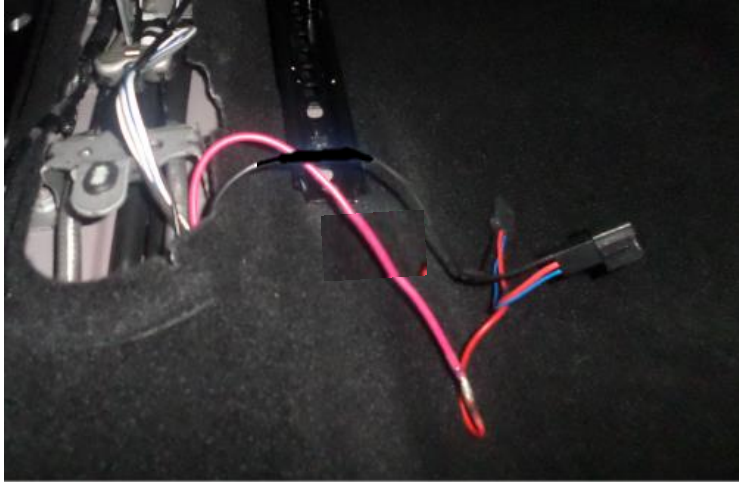
3. Connect the power supply to the 12V socket
 - a. 12V Cable



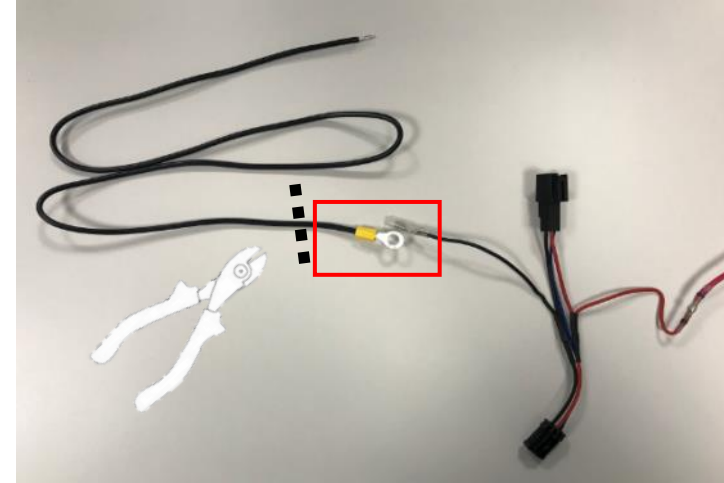
Note : Plug & Play connection

VII - INSTALLING THE SUBWOOFER

4. Connect the ground to the 12V socket
 - a. Ground cable

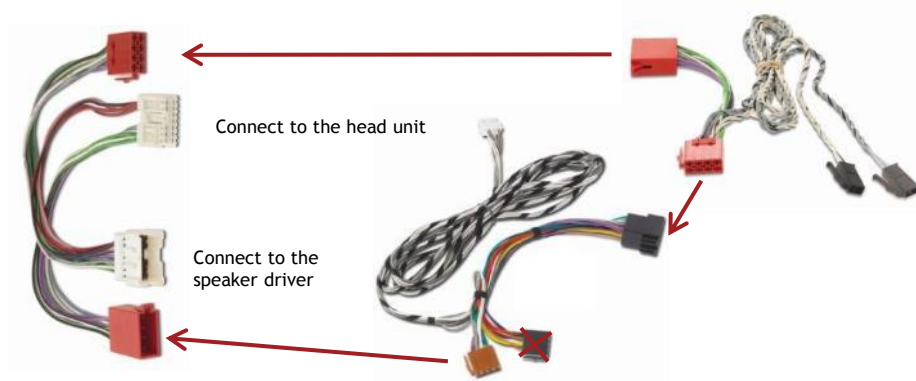


Connect the subwoofer ground cable to the ground wire of the cigarette lighter adapter



VII - INSTALLING THE SUBWOOFER

5. Connect to the car stereo



VIII - INSTALLING THE SUBWOOFER

6. Place the subwoofer



VIII - INSTALLING THE SUBWOOFER

e. Connect (rear)

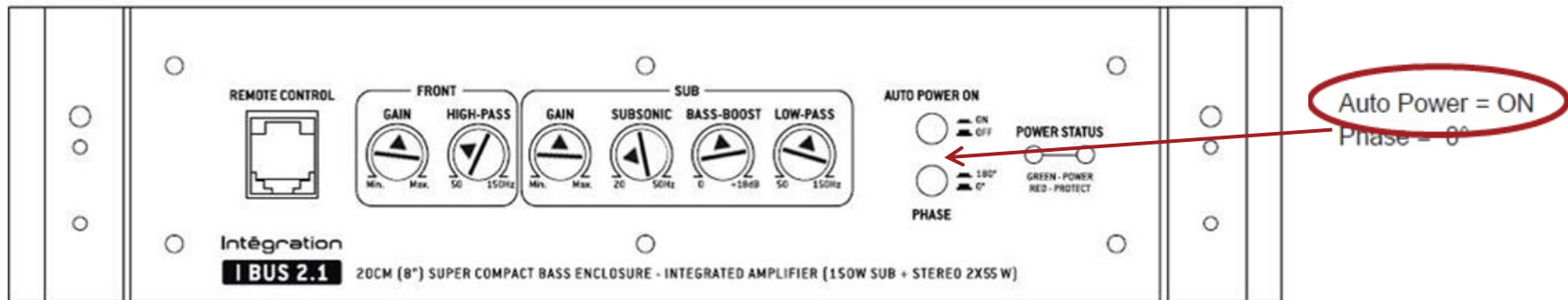


f. Connect (front - remote)



VIII - INSTALLING THE SUBWOOFER

g. Subwoofer Setting.



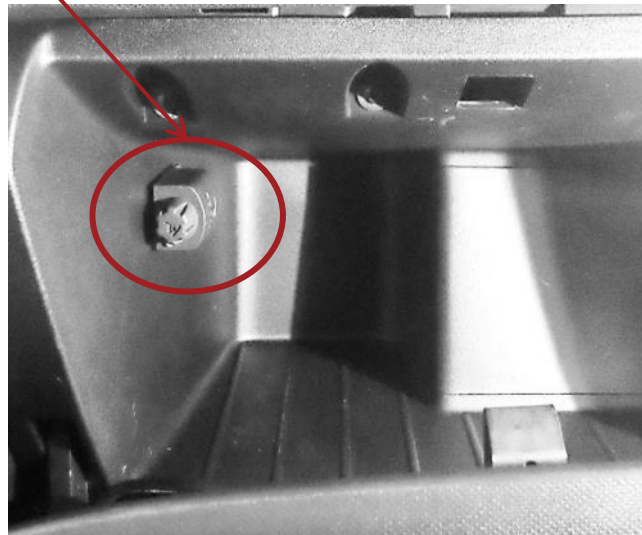
VIII - INSTALLING THE SUBWOOFER

7. Installing the remote control in the glove box

a. Pass the remote cable then make a hole of 1 cm diameter to pass the cable



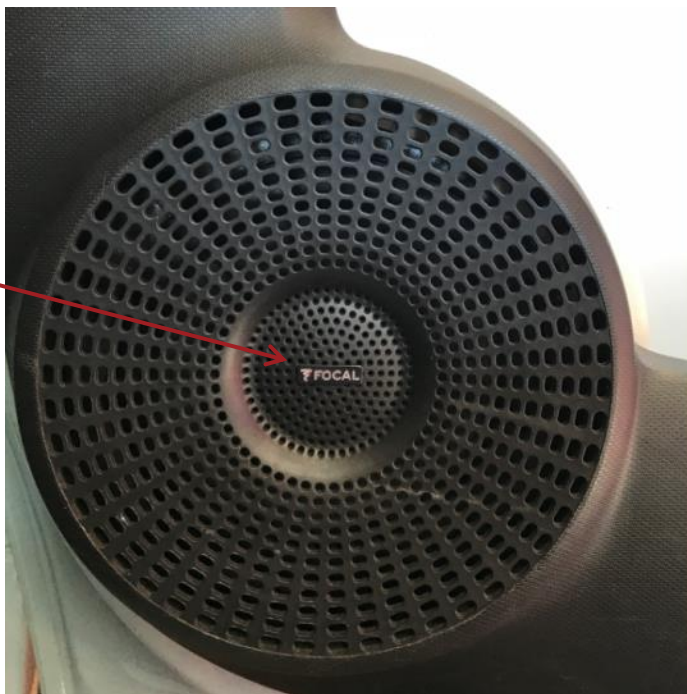
b. Suggestion of positioning in the glove box



Note : Secure the remote with Velcro® .

IX - ACCESSORIES

a. Stickers : You can add the stickers provided in the kit to customize the grids tweeters.



FOCAL[®] *INSIDE*

www.focal-inside.com