

FOCAL/RENAULT

INSTALLATION OF LIVE / POWERED KITS FOR RENAULT
Alaskan – October 2017

FOCAL INSIDE
FI RN Powered 4.320

100% dédié à l'installation sur les véhicules de l'Alliance Renault - Nissan™
Plus de puissance/Plus de dynamique

AMPLIFICATEUR CLASSE D
Connectique d'origine
Puissance RMS : 4 x 55 W RMS
Puissance max : 4 x 80 W



PLUG & PLAY
FOCAL MUSIC DRIVE
IFR165-2

100% dédié au remplacement des équipements d'origine Renault™ et Dacia™
Bande passante étendue - Précision et détails améliorés

Kit complet 2 ans
Connectique d'origine
Supports d'origine
Câbles RCA
20 Watts rms



Intégration
LE PLAISIR SIMPLEMENT

FOCAL
THE SPIRIT OF SOUND

FOCAL INSIDE
MUSIC LIVE
FI RN 690-4

100% dédié au remplacement des équipements d'origine des véhicules de l'Alliance Renault - Nissan™
Sonnet 50 Watts amplifiée - Son de Live - Qualité et précision

Kit complet 2 ans
Connectique d'origine
Supports d'origine
Câbles RCA
20 Watts rms



Intégration
LE PLAISIR SIMPLEMENT

FOCAL
THE SPIRIT OF SOUND

RECOMMENDATIONS BEFORE INSTALLATION

- Reset all car radio audio settings:
 - Ambience = Natural
 - Bass/Midrange/Treble settings = 0
 - Loudness = OFF
 - Fader and Balance = Centred
- The speaker drivers require a break--in period (approximately 20 hours) before they reach optimal sound quality.
- After this break--in period, you can fine-tune the audio settings as you please.

I. ASSEMBLING THE FRONT SPEAKER DRIVERS

1. The woofers are preassembled with their spacers and connectors



3

II. INSTALLING THE FRONT SPEAKER DRIVERS

The picture below shows the locations of the screws to remove.



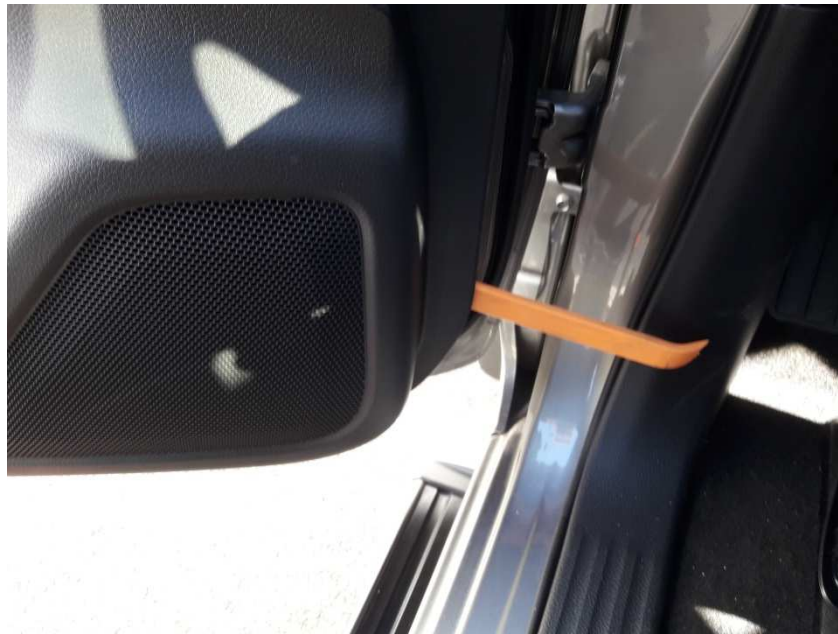
II. INSTALLING THE FRONT SPEAKER DRIVERS

1. Unclip the handle protection using prying removal tools.



II. INSTALLING THE FRONT SPEAKER DRIVERS

1. Unclip the door panel using prying tools.



II. INSTALLING THE FRONT SPEAKER DRIVERS

2. Remove the original speaker driver



3. Screw and connect the speaker driver



III. ASSEMBLING THE TWEETERS

1. The tweeters are preassembled with their spacers and connectors



IV. INSTALLING THE TWEETERS

1. Unclip the shutters from the handle then unscrew it



2. Remove the windshield trim and the tweeter grille using prying removal tools



IV. INSTALLING THE TWEETERS

3. Remove the original tweeter



4. Connect then screw the Focal tweeter



10

V. ASSEMBLING THE REAR SPEAKER DRIVERS

The speaker driver is already configured for this vehicle



VI. INSTALLING THE REAR SPEAKER DRIVERS

The picture below shows the locations of the screws to remove.



VI. INSTALLING THE REAR SPEAKER DRIVERS

1. Unclip the handle protection using prying removal tools.



VI. INSTALLING THE REAR SPEAKER DRIVERS

3. Unclip the door panel using prying tools.



VI. INSTALLING THE REAR SPEAKER DRIVERS

4. Remove the original speaker driver

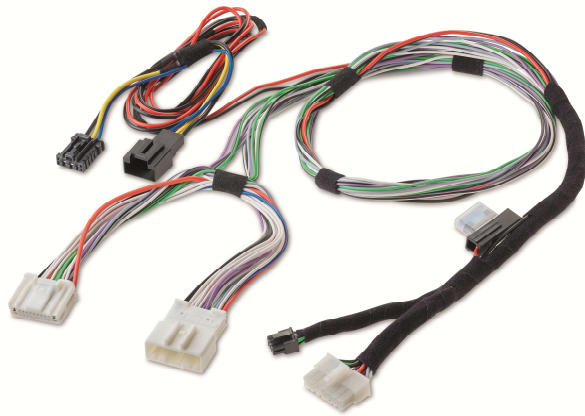


5. Screw the Focal speaker driver Then orientate the tweeter upwards



VII. AMPLIFIER PREPARATION

Necessary parts for the amplifier installation:



Connectors



Plaque



Support



Screws



Amplifier

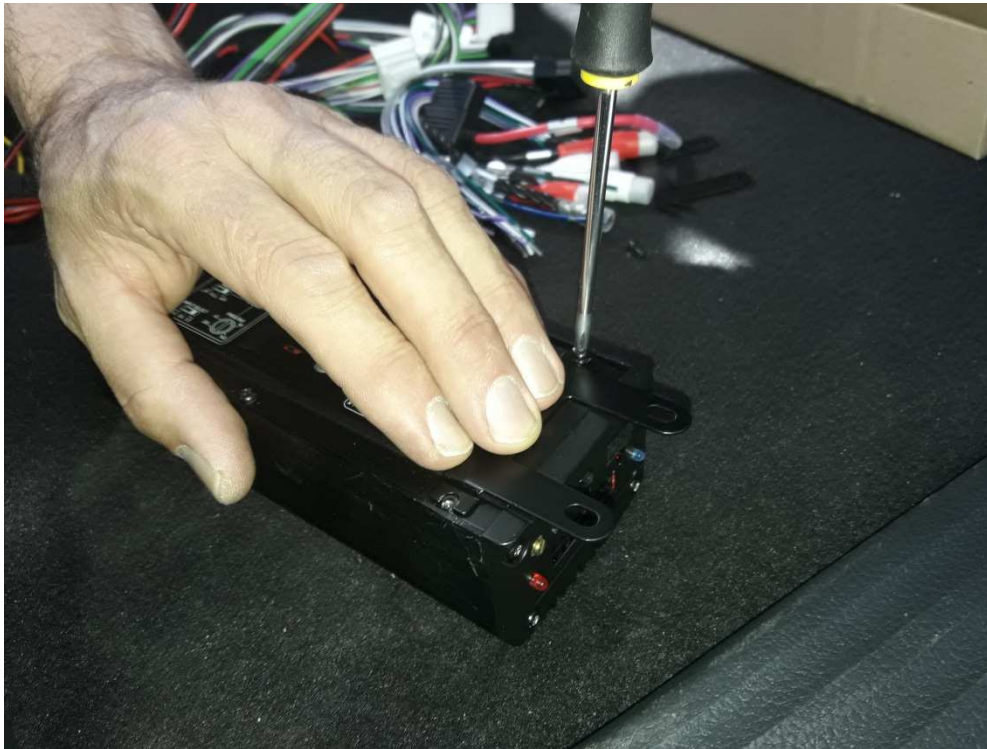
VII. AMPLIFIER PREPARATION

Settings



VII. AMPLIFIER PREPARATION

1. Screw the support to the amplifier



VII. AMPLIFIER PREPARATION

2. Screw the amplifier to the plaque



19

VIII. ASSEMBLING THE AMPLIFIER

1. Remove the low console part using prying tools



VIII. ASSEMBLING THE AMPLIFIER

2. Remove the side walls of the head unit using prying tools



21

VIII. ASSEMBLING THE AMPLIFIER

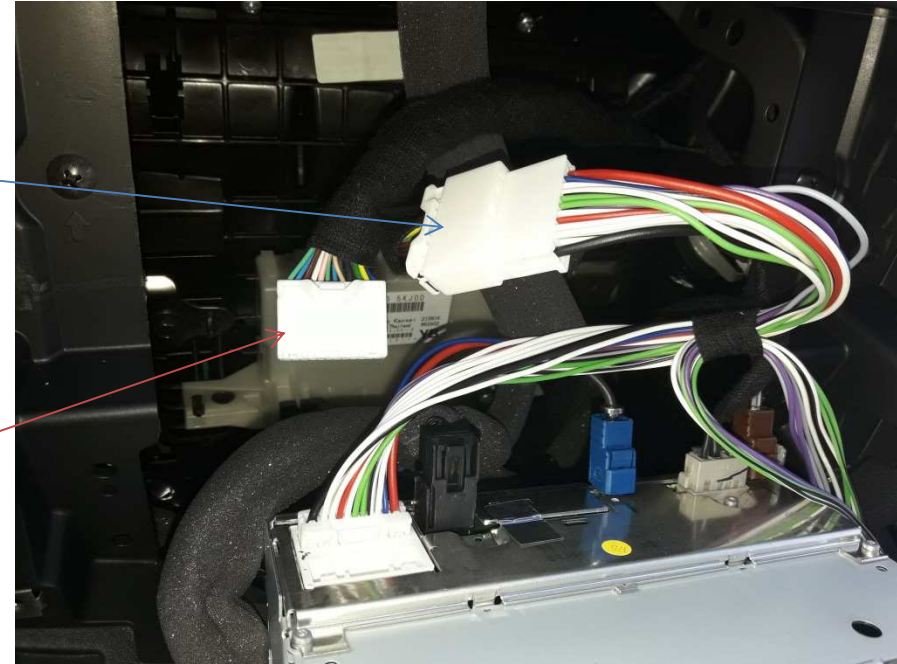
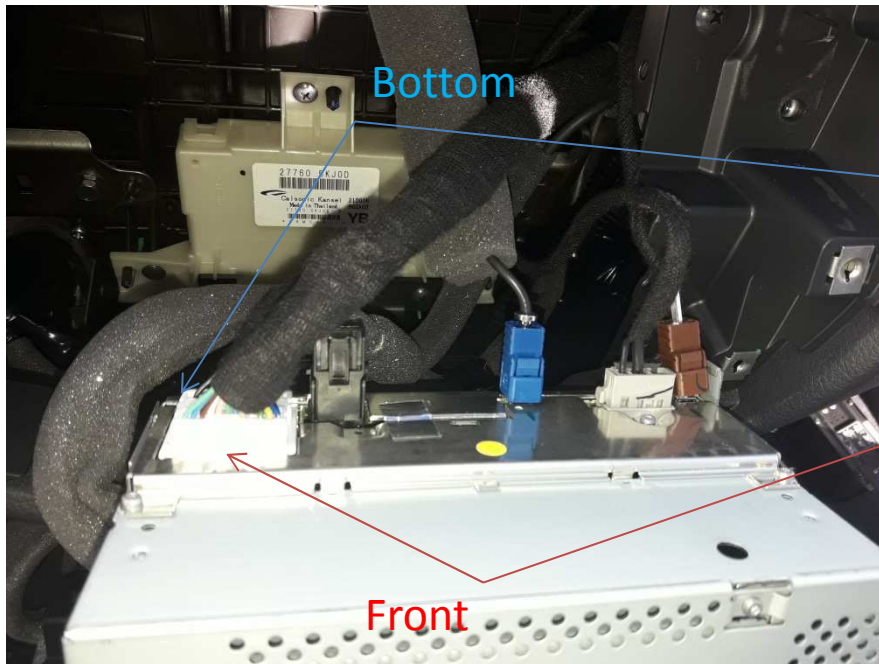
3. Unscrew the 10 screws in order to remove the head unit



warning, 2 screws from each side are hidden inside the head unit

VIII. ASSEMBLING THE AMPLIFIER

4. Remove the head unit and plug the connectors



VIII. ASSEMBLING THE AMPLIFIER

5. Unclip the glove compartment in order to run the connectors beneath it



24

VIII. ASSEMBLING THE AMPLIFIER

6. Run the connectors through the glove compartment and under the head unit then plug it



Plug to the power outlet

25

VIII. ASSEMBLING THE AMPLIFIER

7. Remove the screw beneath the glove compartment



26

VIII. ASSEMBLING THE AMPLIFIER

8. Plug the connectors to the amplifier then screw it to the screw location beneath the glove compartment



Hide the connectors under the carpet

VIII. ASSEMBLING THE AMPLIFIER





     www.focal.com

FOCAL® is trademark of FOCAL-JMLAB®

