

FOCAL/RENAULT

INSTALLATION OF LIVE/PREMIUM KITS FOR
Clio 5 - *January 2019*



FOCAL *INSIDE*

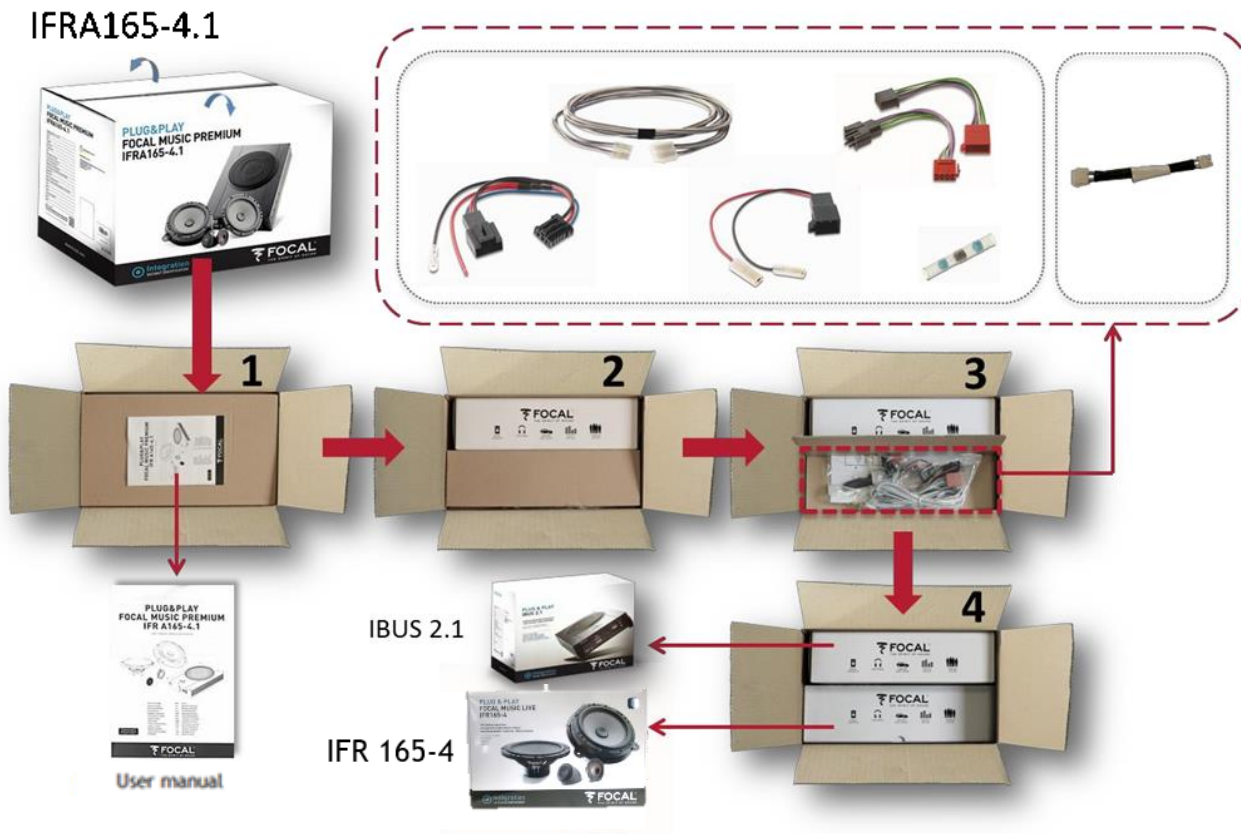
RECOMMENDATIONS BEFORE INSTALLATION

Reset all car radio audio settings:

- Ambience = Natural
- Bass / Midrange / Treble settings = 0
- Loudness = OFF
- Fader and Balance = Centered

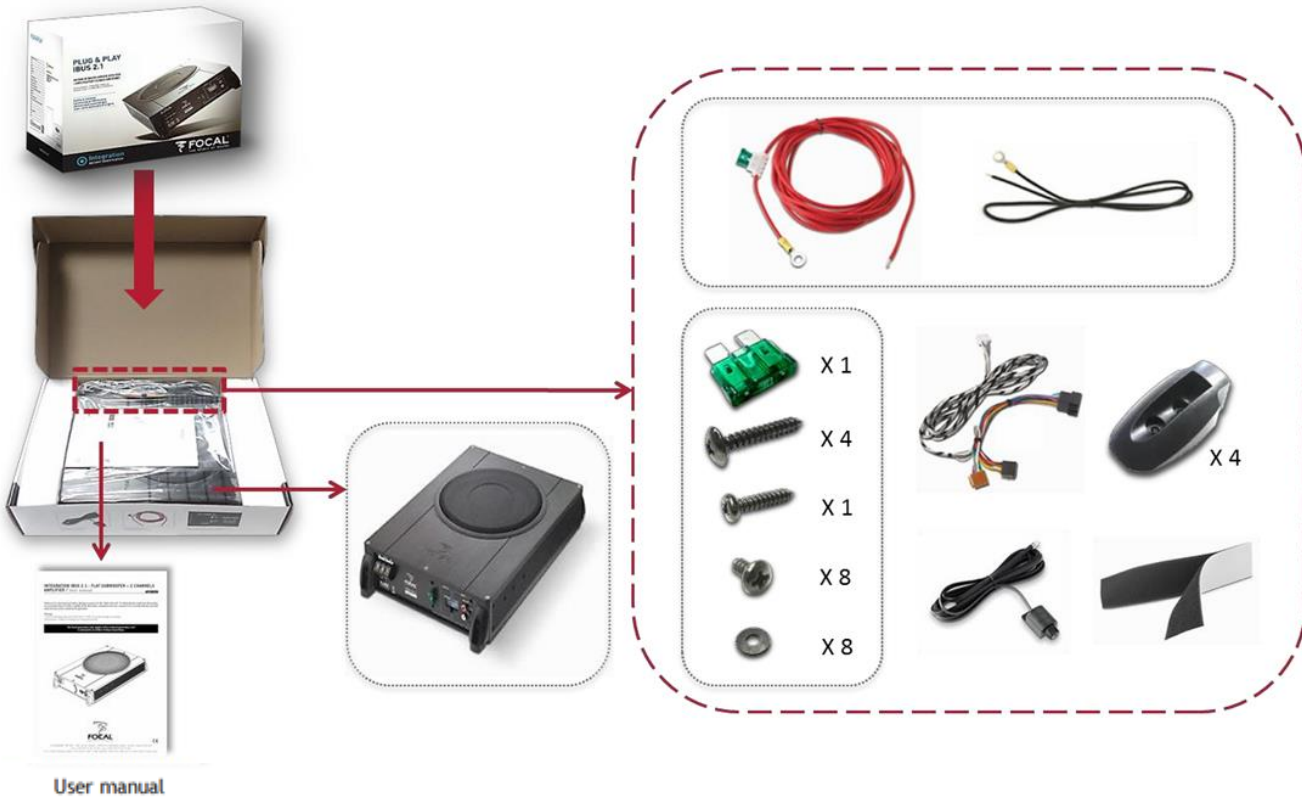
The speaker drivers require a break-in period (approximately 20 hours) before they reach optimal sound quality. Start with tracks without too much low frequencies at a low volume. Then turn the sound up little by little. After this break-in period, you can fine-tune the audio settings as you please.

I - UNBOXING AND LOCATION OF PARTS



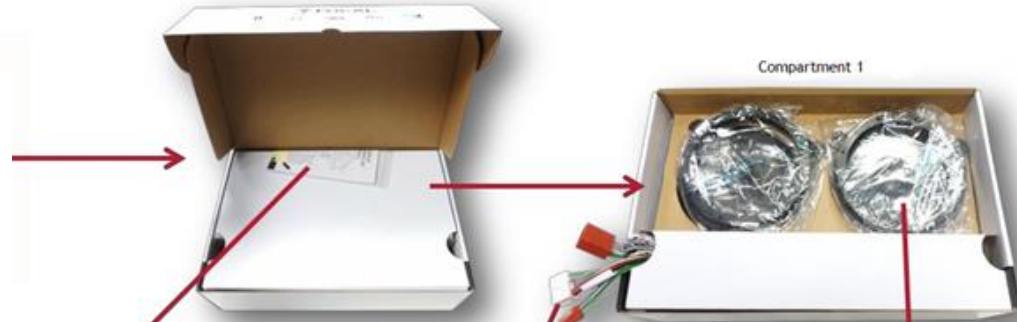
I - UNBOXING AND LOCATION OF PARTS

Ibus 2.1



I - UNBOXING AND LOCATION OF PARTS

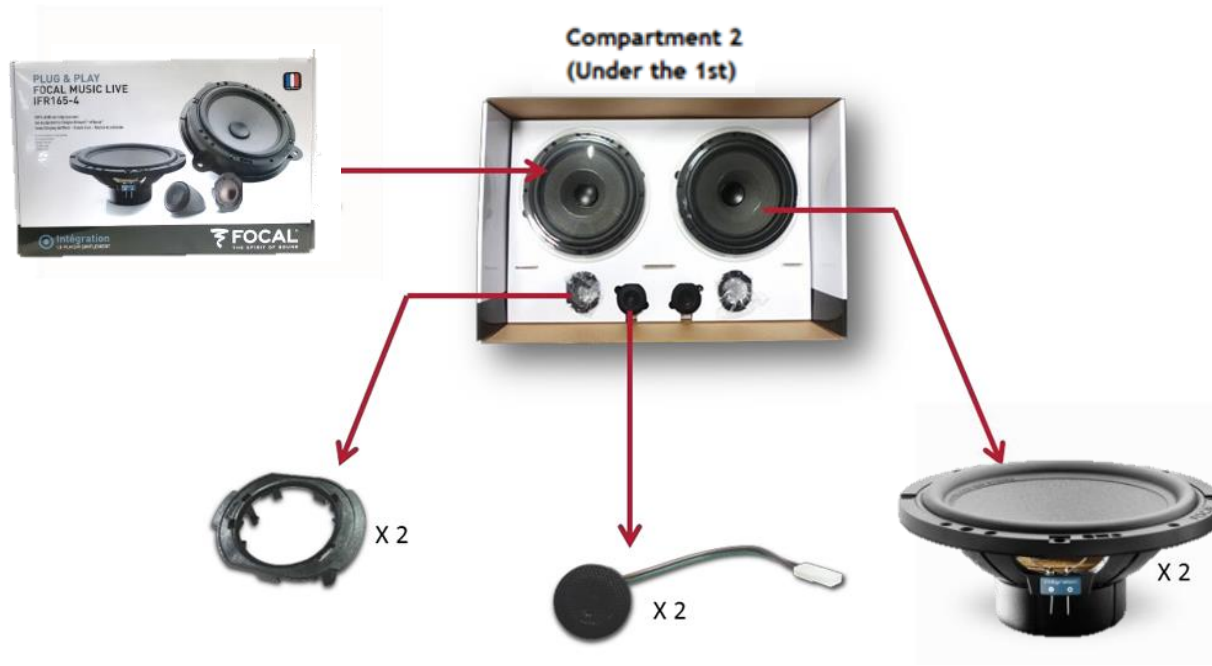
IFR 165-4



FOCAL *INSIDE*

I- UNBOXING AND LOCATION OF PARTS

IFR 165-4



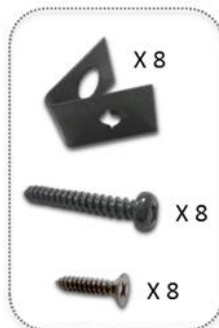
FOCAL[®] INSIDE

I - UNBOXING AND LOCATION OF PARTS

IFR 165-4



Under compartment 2



FOCAL[®]INSIDE

II - ASSEMBLING THE FRONT SPEAKER DRIVERS

1. Equipment required for assembling the woofer



II - ASSEMBLING THE FRONT SPEAKER DRIVERS

2. Connections

a. Insert the cable into the notch



b. Before you screw, make sure that the two logos are aligned



c. Screw the 4 screws



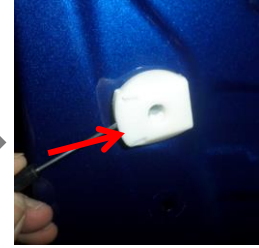
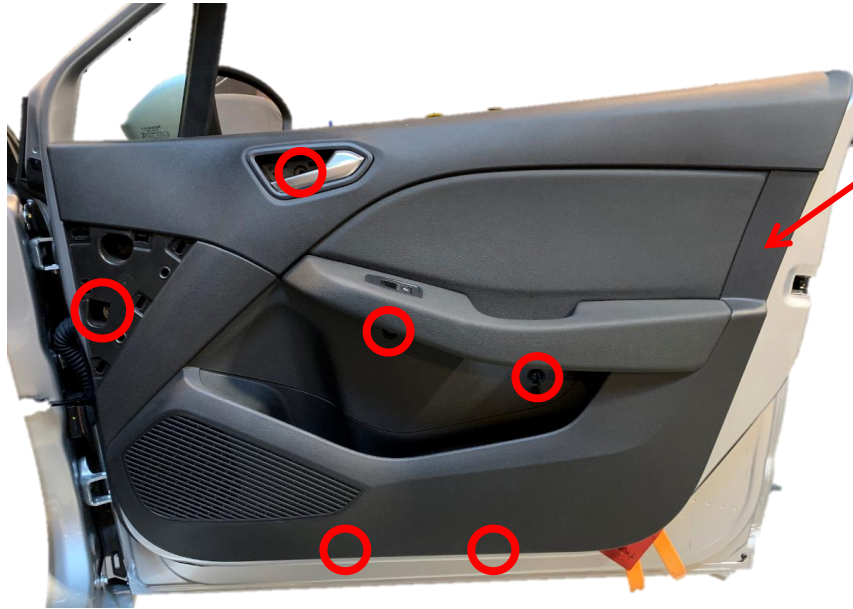
D. Block the crossover



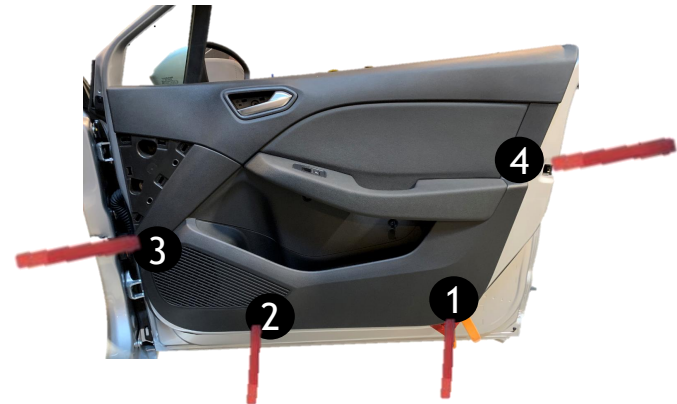
III - ASSEMBLING THE FRONT SPEAKER DRIVERS

1. Unclip the frontdoor panel

a. Unclip and unscrew then remove the frontdoor panel



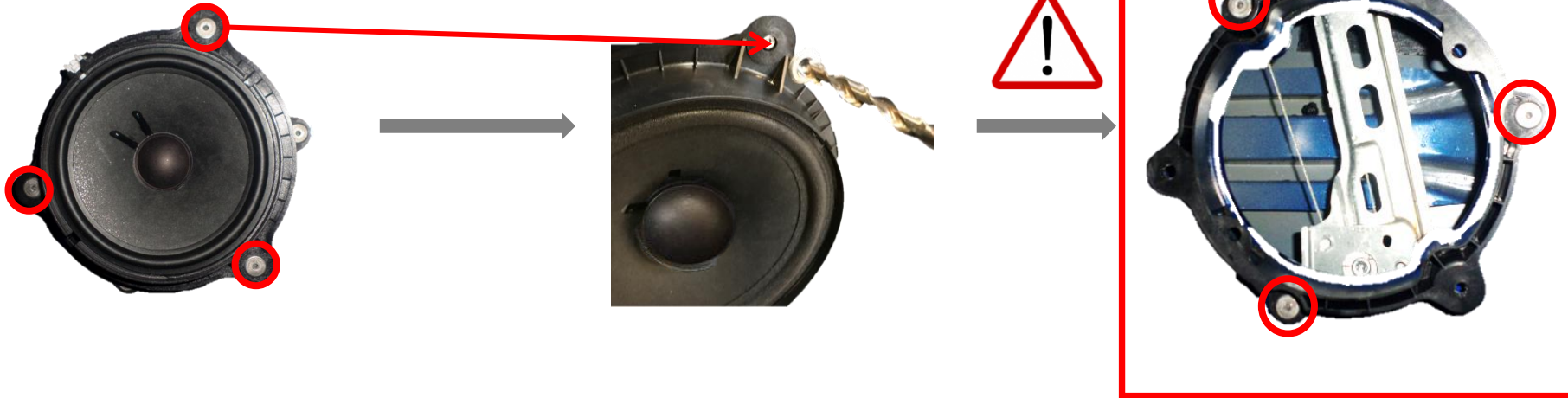
Click !!



III - ASSEMBLING THE FRONT SPEAKER DRIVERS

2. Remove the original speaker driver

a. Pierce the 3 rivets' head.



III - ASSEMBLING THE FRONT SPEAKER DRIVERS

3. Installing the front speaker drivers

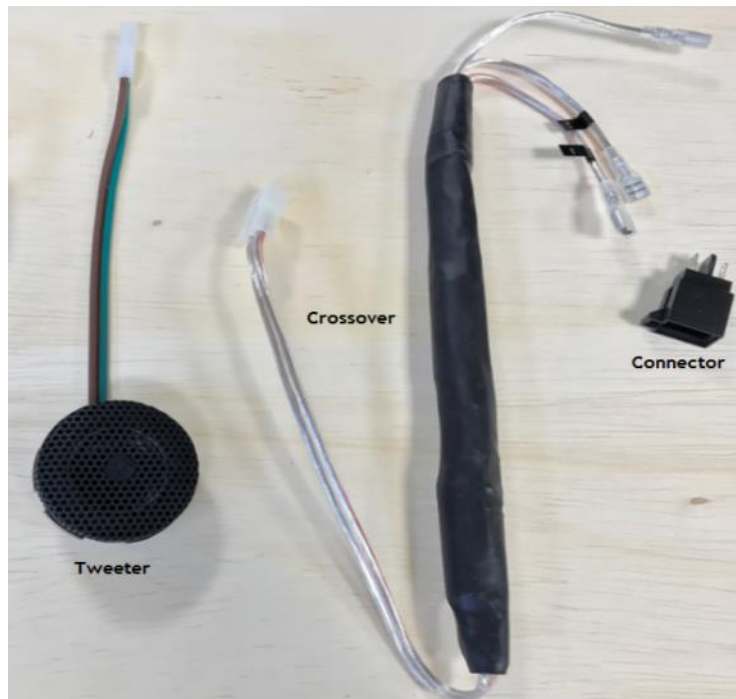
a. Rivet on the door frame and connect the Focal speaker driver.



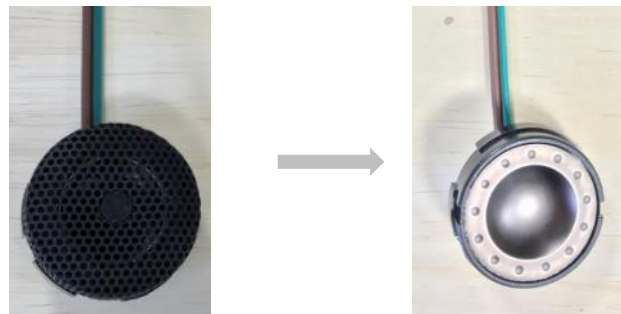
Note : Some version may use screws. If so, do not use the rivet

IV - ASSEMBLING THE TWEETER

1. Equipment required for assembling the tweeter

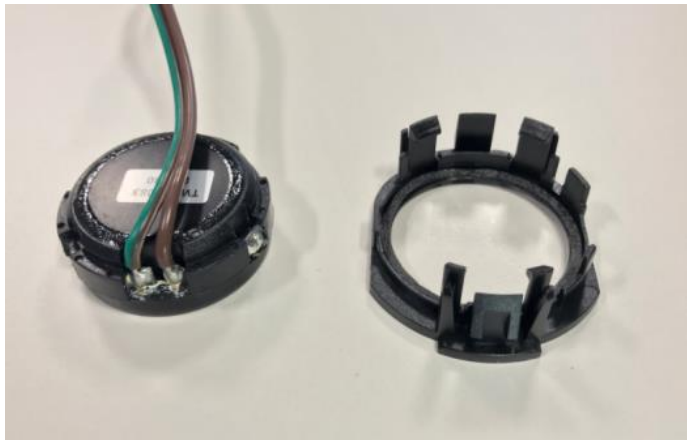



2. Remove the tweeter's grille by simply unclipping it



IV - ASSEMBLING THE TWEETER


3. Slot the tweeter into the spacer



 **Note :** The two parts must be displayed as shown above.

4. Connect at position 2



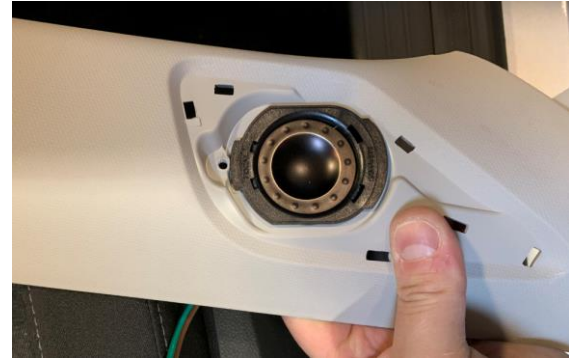
 **Note :** Position 1 is not used for this vehicle


V - CONNECTING THE TWEETER

1 Remove the tweeter grille



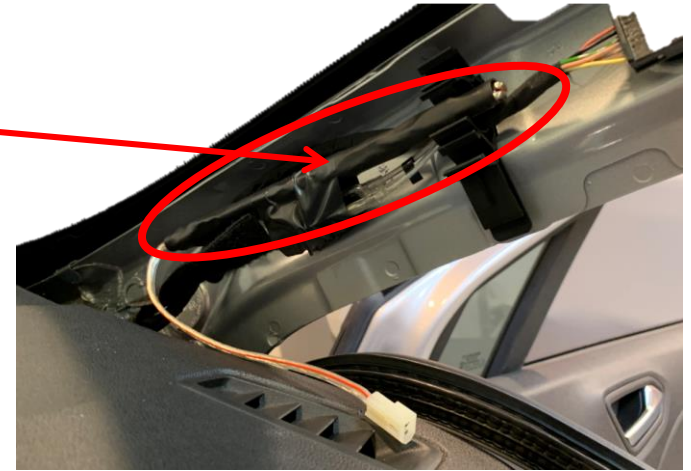
2 Remove the tweeter



 **Note:**
Do not forget to put the screw back

V - CONNECTING THE TWEETER

3 Connect the crossover



VI - ASSEMBLING THE REAR SPEAKER DRIVERS

1. Unscrew



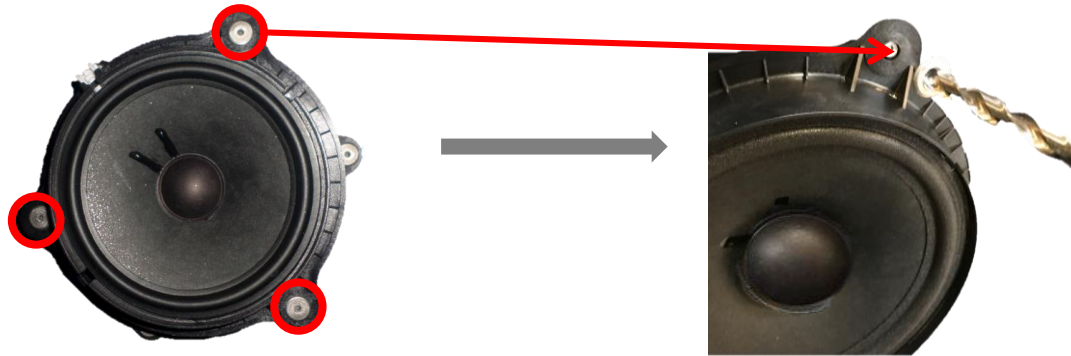
2. Remove the door panel



VI - ASSEMBLING THE REAR SPEAKER DRIVERS

3. Remove the original speaker driver

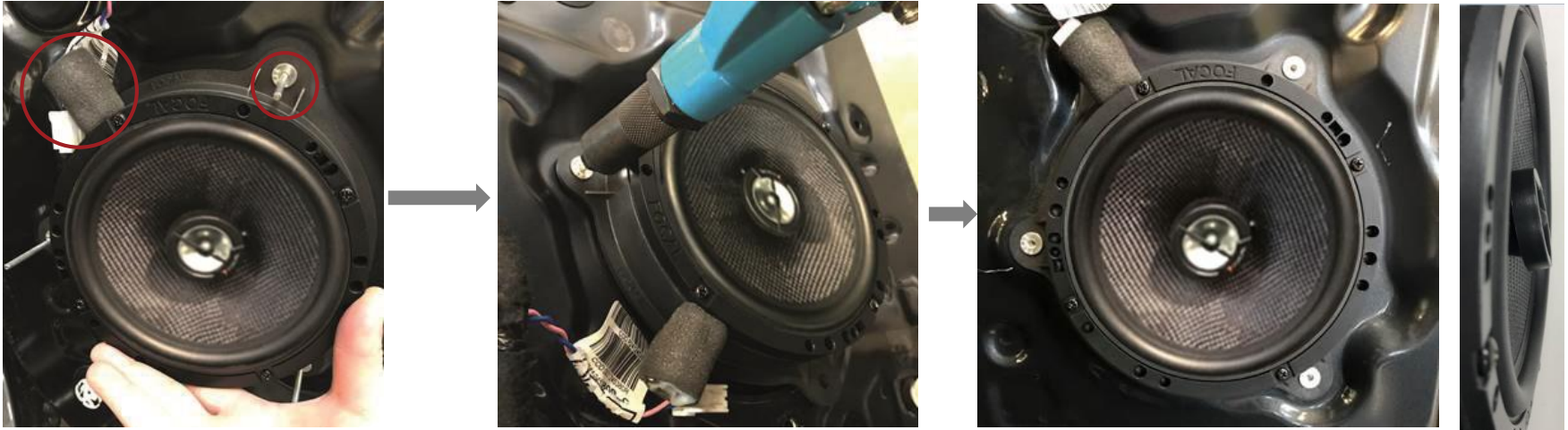
a. Pierce the 3 rivets' head



VI - ASSEMBLING THE REAR SPEAKER DRIVERS

4 Installing the rear speaker driver

a. Rivet on the door frame and connect the Focal speaker driver.



Note : Orientate the tweeter by turning it up or down

VII - PREPARING THE SUBWOOFER

1. Equipment required for installing the subwoofer

Ground cable



Power cable



Heat shrinkable sleeve



Power connector



Subwoofer cable with remote control



Adapter



Ibus 2.1



Extension cable



Head unit - subwoofer interconnect cable



Hook-and-loop fasteners (e.g. Velcro®)



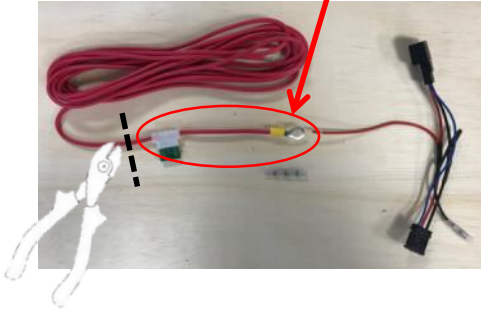
Connectors



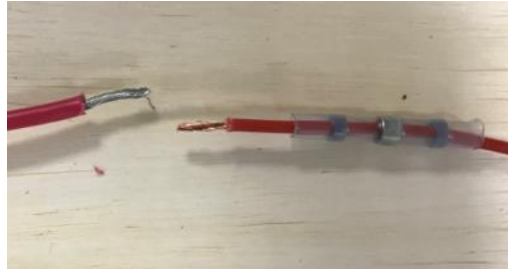
VII - PREPARING THE SUBWOOFER

1. Prepare subwoofer cable assembly

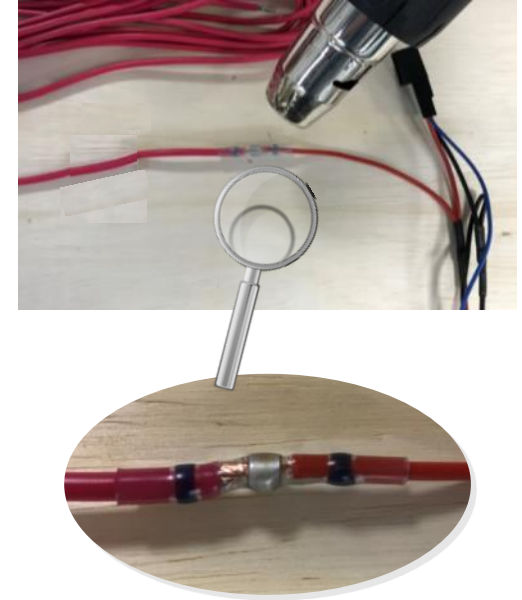
a. Remove the fuse and pod



b. Place the heat shrinkable sleeve over the stripped parts of the cables.



c. Use a heat gun to heat the heat shrinkable sleeve.



VII - PREPARING THE SUBWOOFER



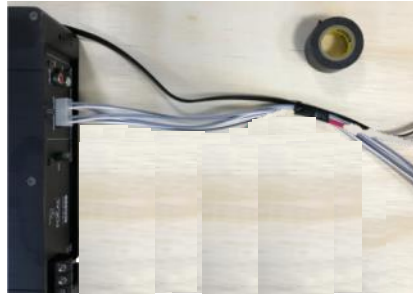
d. Connect the adapter to the extension cable.



e. Place the subwoofer without connecting it.



f. Tape the cables together every 20 cm.



g. Keep slack for the cable's passage on the side of the head unit.

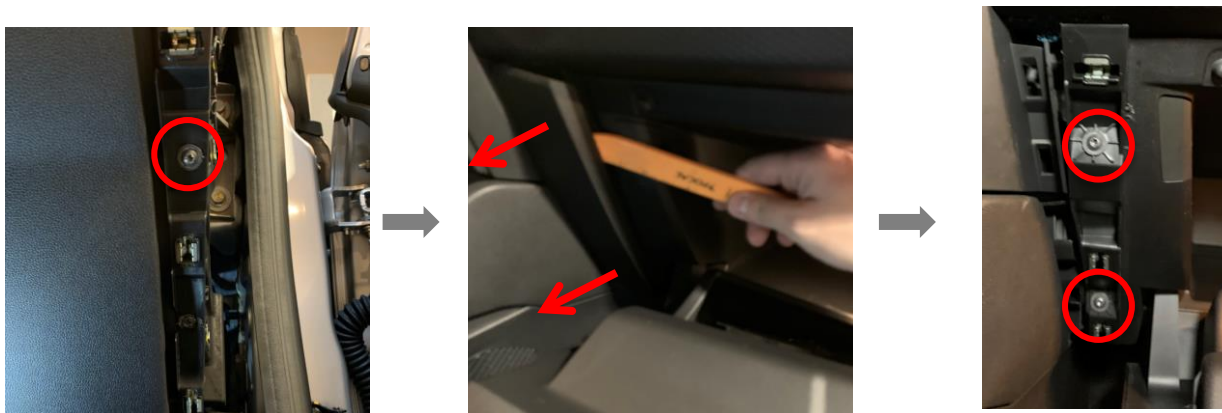


VIII - INSTALLING THE SUBWOOFER

1. Remove the airbag cover on the side



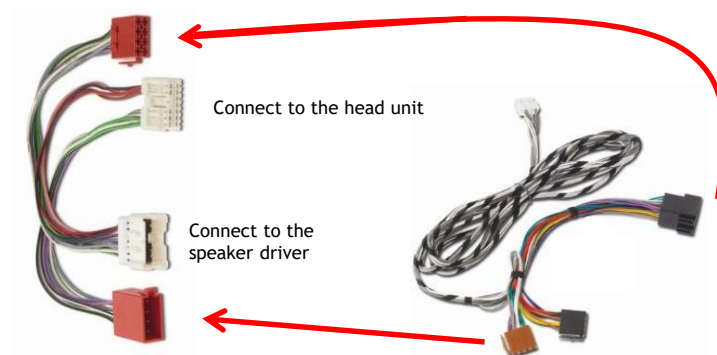
2. Remove the screws on the glove box



FOCAL *INSIDE*

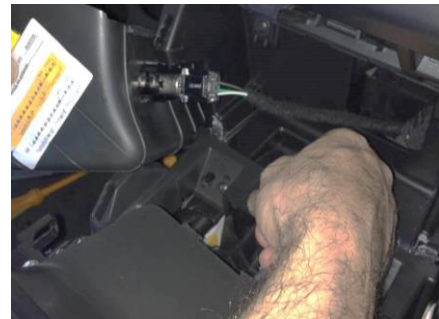
VIII - INSTALLING THE SUBWOOFER

3. Connect to the head unit

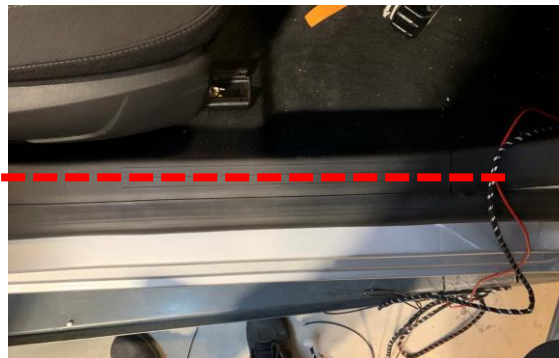


VIII - INSTALLING THE SUBWOOFER

4. Wiring



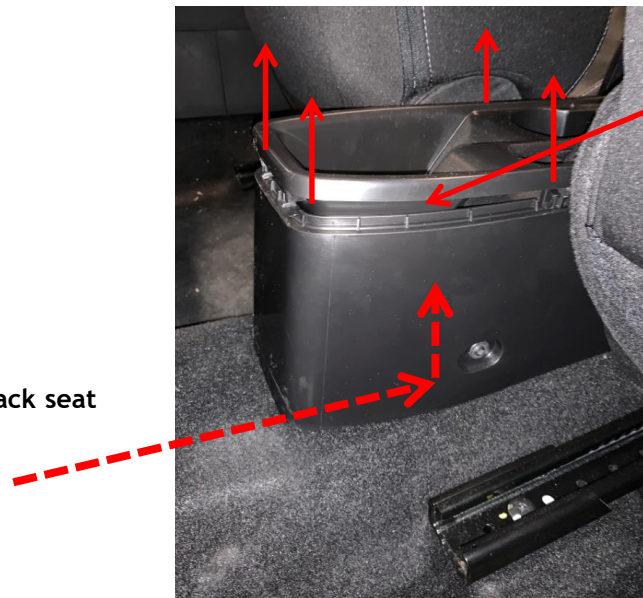
Remove the panel in order to get to the 12V socket, then connect to the power supply



VIII - INSTALLING THE SUBWOOFER

5. Remote location

From the back seat

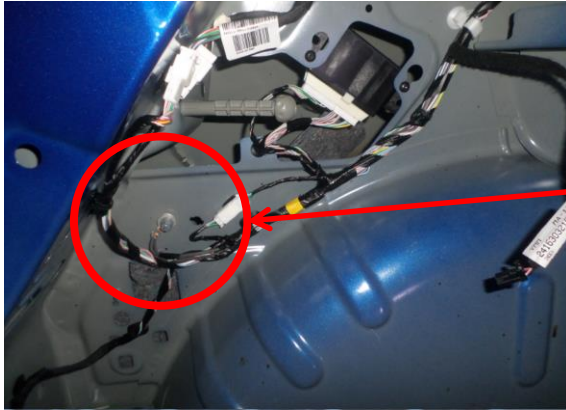


Note : unscrew on each side.

VIII - INSTALLING THE SUBWOOFER

3. Ground wire connection(black wire)

- a. Connect the ground wire to the rear ground slot



VIII - INSTALLING THE SUBWOOFER

4. Subwoofer positioning

- a. Position the subwoofer behind the backseat on the left (It is advised to screw the subwoofer with the provided screws and rubber pads)



Note : Fix the subwoofer with the provided Velcro®.



VIII - INSTALLING THE SUBWOOFER

b. Connect (rear)

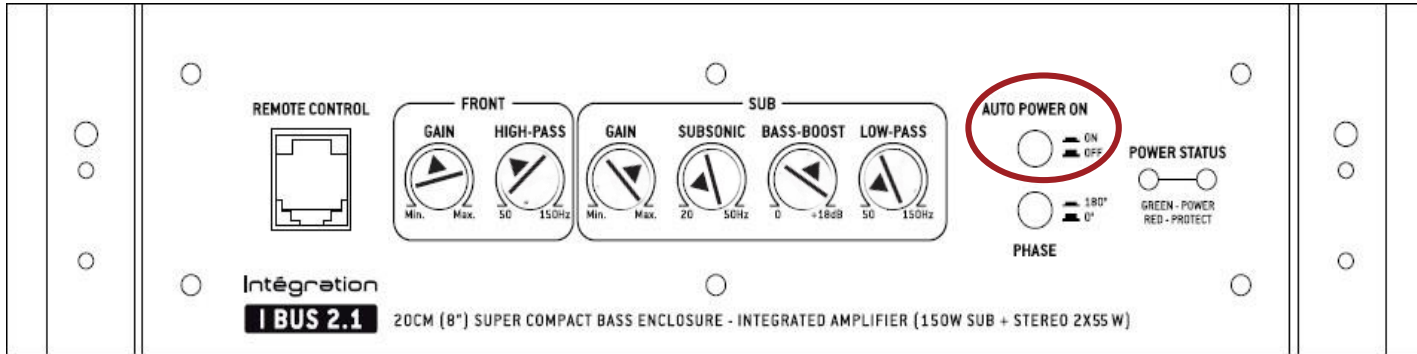


c. Connect (front - remote)



VIII - INSTALLING THE SUBWOOFER

d. Subwoofer settings.



Auto Power = ON
Phase = 0°

IX - ACCESSORIES

a. Stickers : Put the provided stickers onto the tweeters' grille.



FOCAL[®] *INSIDE*

www.focal-inside.com